

# Faculty-Administrator Collaboration Team (FACT) Proposal Process Workshop

FDP Meeting – May 2019



COLLEGE of  
CHARLESTON

# Agenda for FACT Session

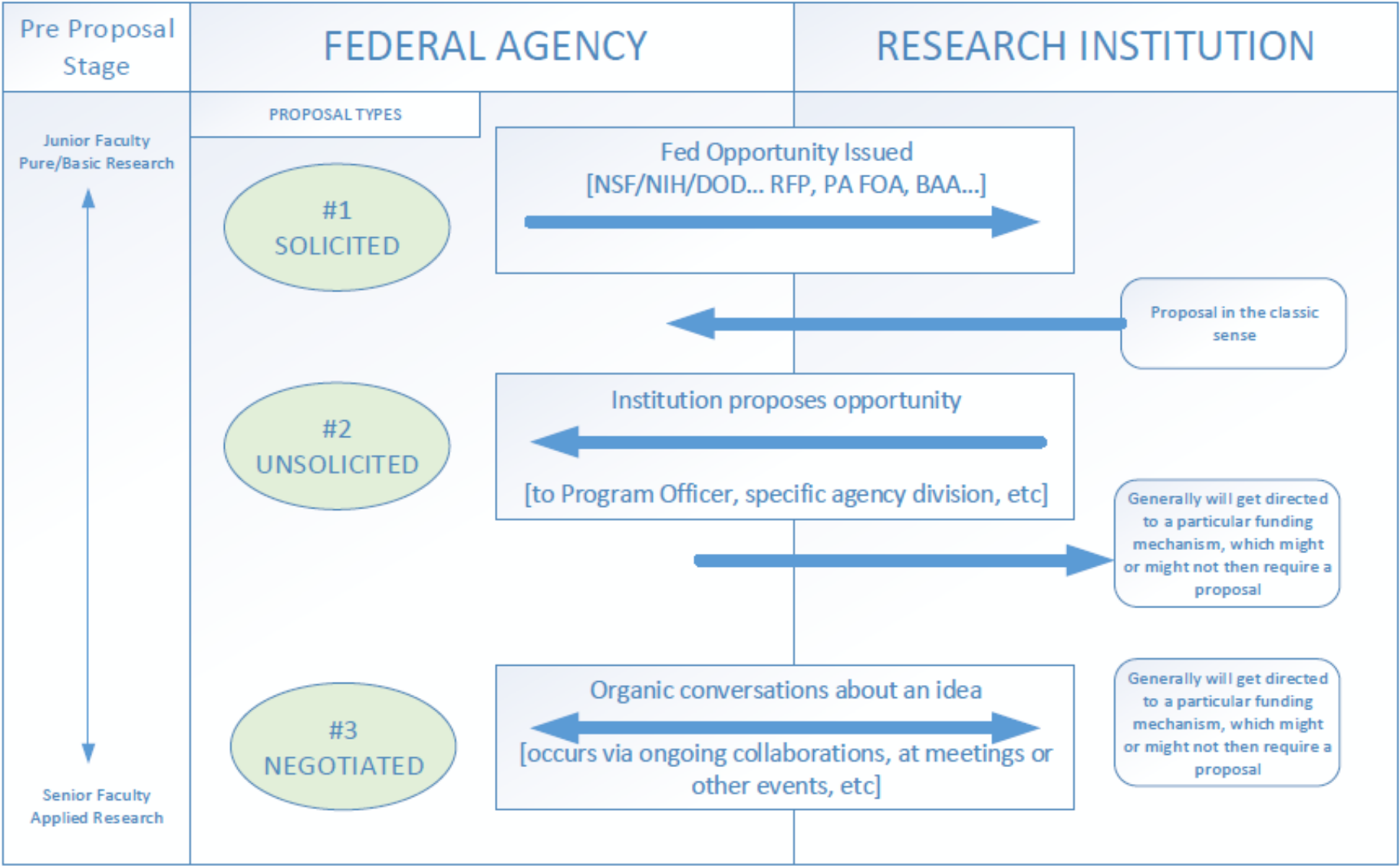
- **Introductions – 5 min**
- **Background on current project – 10 min**
- **Workshop overview and goals – 5 min**
- **Workshop Activities – 30 min**
- **Report out – 15 min**
- **Discussion and wrap up – 10 min**

# Eleven Participating Institutions

FDP Member Organization	Faculty Rep	Admin Rep
Case Western Reserve	Harihara Baskaran	Stephanie Endy
Charles R. Drew University of Medicine and Science	Eva McGhee	Perrilla Johnson-Woodard
College of Charleston	Kelly Shaver	Susan Anderson
Duke University	Adrian Hernandez	Jim Luther
Northeastern University	David Budil	Joan Cyr
Michigan State University	Laura McCabe	JR Haywood
Michigan Tech University	Larry Sutter/Jason Carter	<b><u>Dave Reed</u></b>
U Arkansas Medical Sciences	Steven Post	Suzanne Alstadt
U of North Carolina Chapel Hill	Lori Carter-Edwards	Robin Cyr
University of Texas at Austin	Dean Appling	Renee Gonzales/Courtney Swaney
University of Washington	<b><u>Mark Haselkorn</u></b>	Lynette Arias/Rick Fenger

# Workshop Background

- Five FACT member institutions produced a flow chart intended to represent their process from conception to submission of a proposal
- Of particular interest to FACT is the interaction and collaboration of Faculty and Administrators
- We are also considering many complicating factors: size of institution, different types and roles of administrators and faculty, different types of proposals...



# Workshop Goals

- Find and analyze similarities and differences among the five flowcharts
- Analyze what these flowcharts tell FDP about how faculty and administrators work together and what is working and not working in this relationship?
- Consider larger lessons, if any, for the national proposal submission system

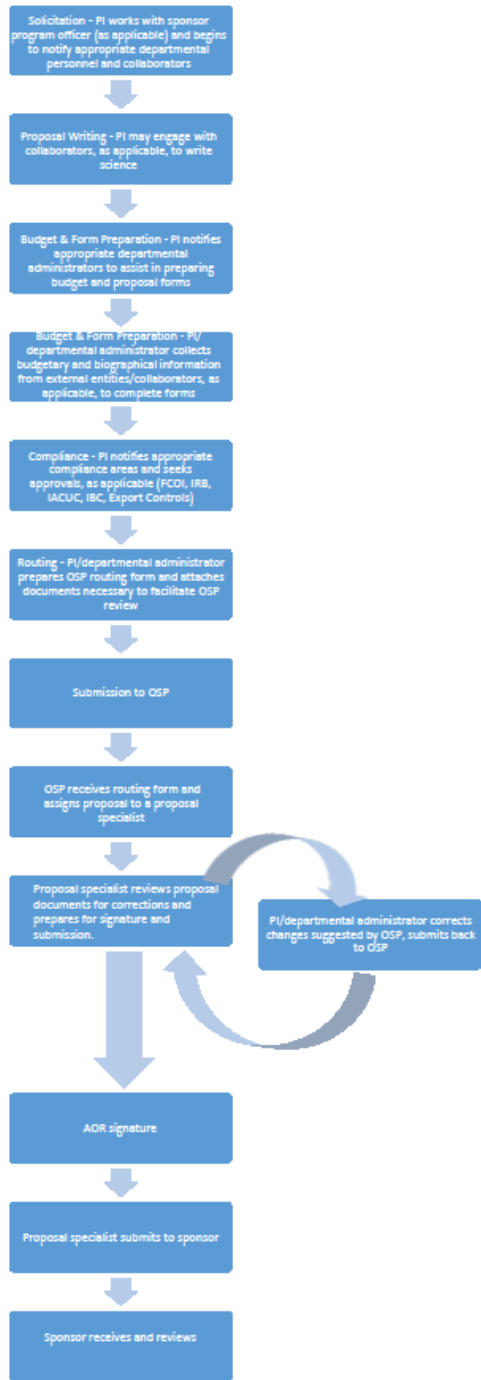
# Workshop Activities

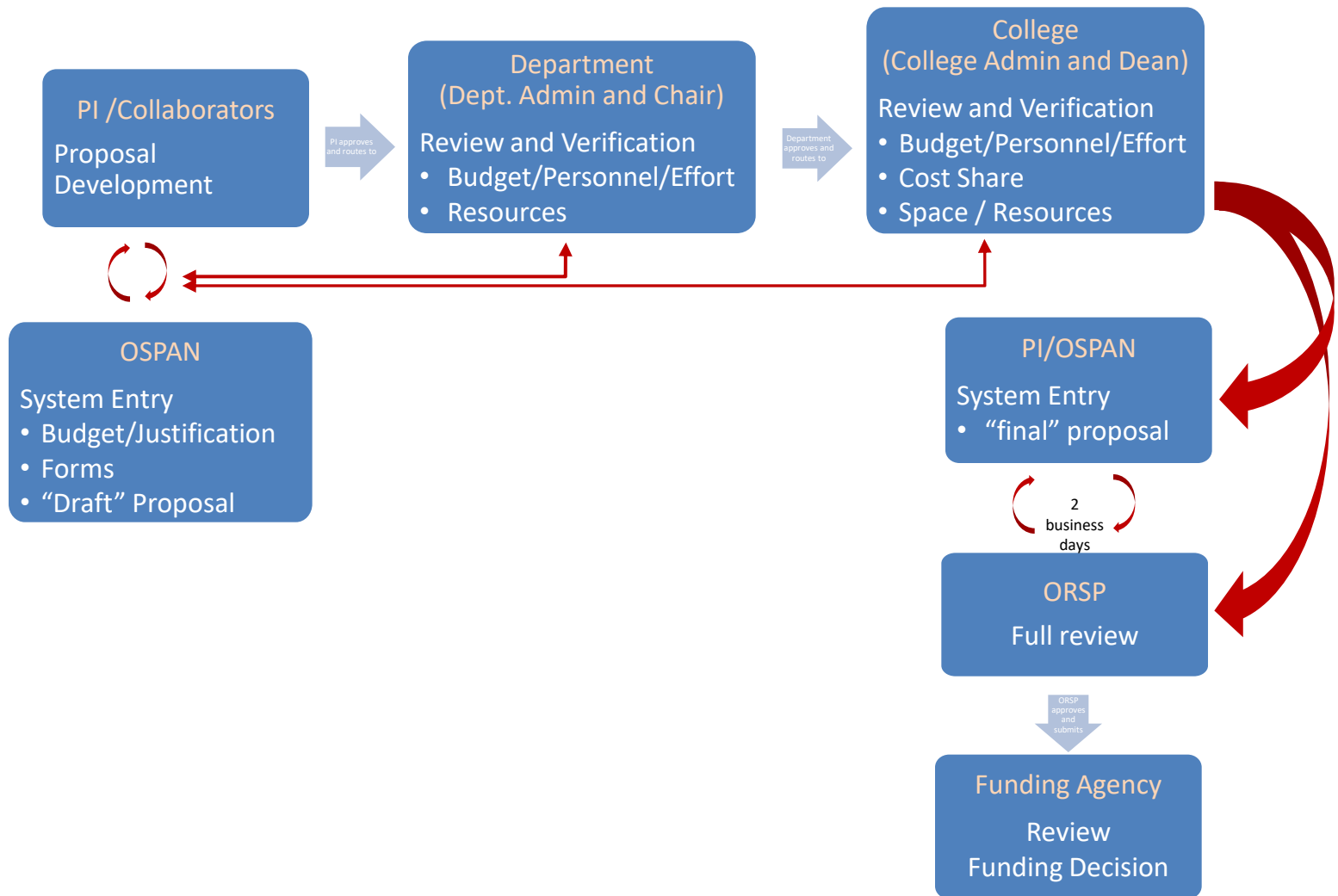
- Break into groups and review the five flow charts you will be given, first individually and then as a group. Identify similarities and differences.
- Discuss these similarities and differences. What do you think they stem from? What do they tell us about the institutions? About the relationship between faculty and administrators?
- Consider the flow charts in light of the overall national research system. How much of these processes is driven by institutional issues versus issues stemming from the national research system?

# Workshop Materials

- You will get a packet of five flow charts that look something like this...



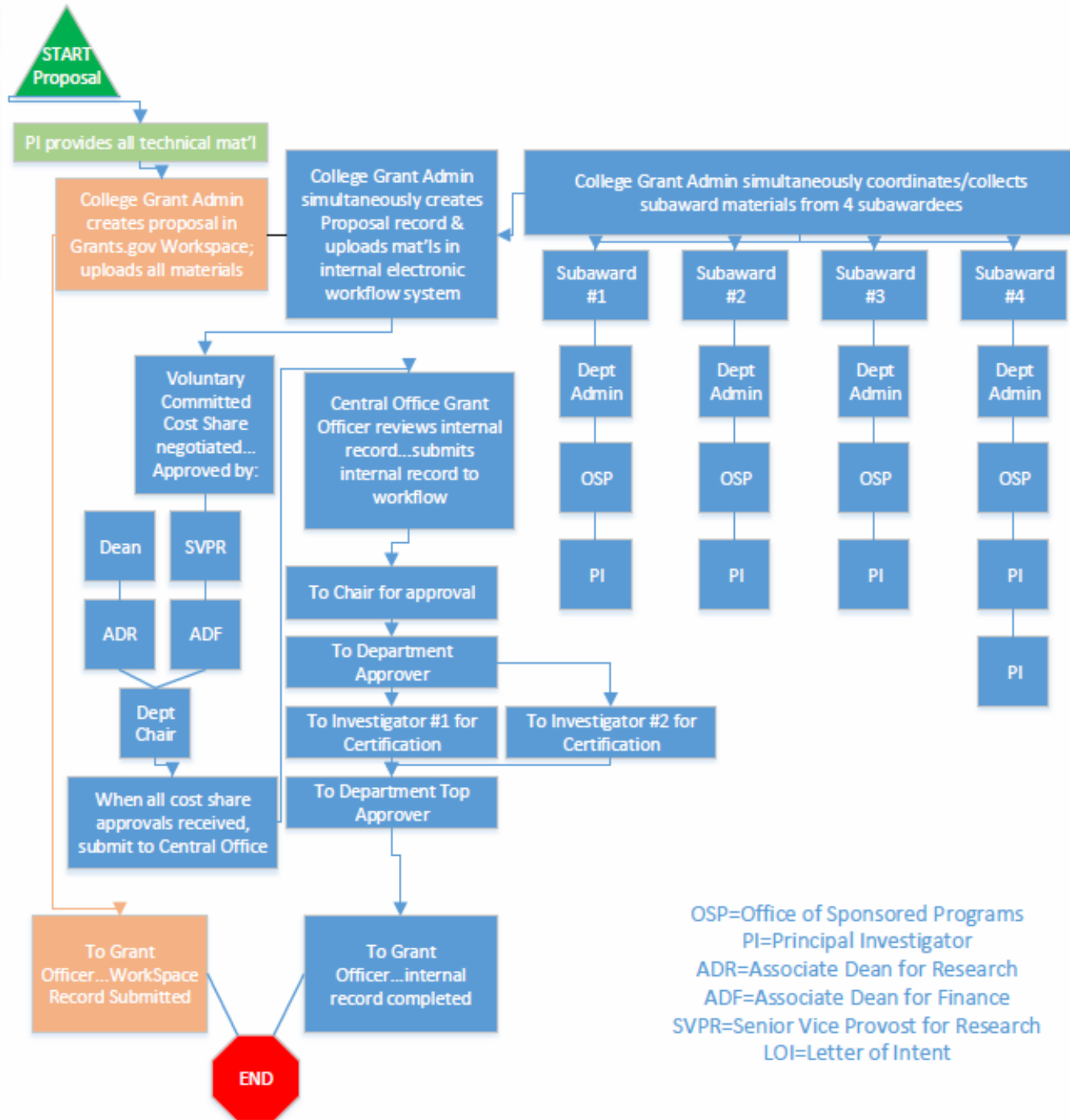




## Department of Energy

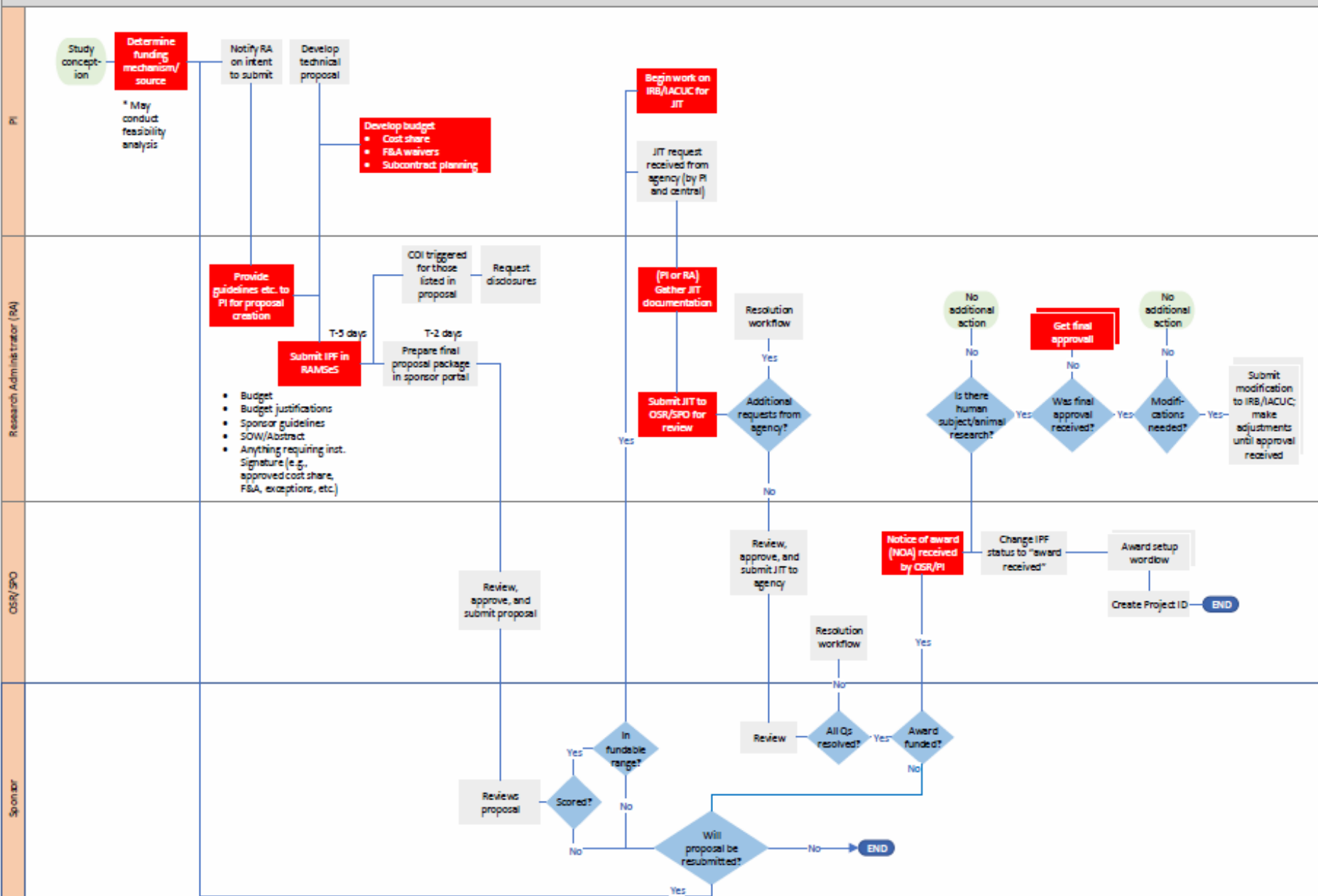
- One College proposal submission
- College has central grant admin service model

- If multiple colleges, ADR and ADF of each college would approve Cost Share
- If junior Grant Officer, additional Director Review
- For proposals without an LOI requirement, If Limited Submission, would start at Research Development Office for selection process



## Federal sponsors – high-level process map

Expected timeline to complete major steps to be added



# Final Discussion

- We will:
  - Hear a report out from each group
  - Consider the similarities and differences in what each group found.
  - Consider what we have learned in the context of (a) institutional research goals and (g) the goals of the national system for awarding funded research
  - Consider what we have learned about the nature and role of faculty/administrator collaboration