

NSF Proposal & Award Policy Update

FDP Meeting

September 21, 2020



National Science Foundation

**WHERE DISCOVERIES
BEGIN**

Presenter

Jean Feldman

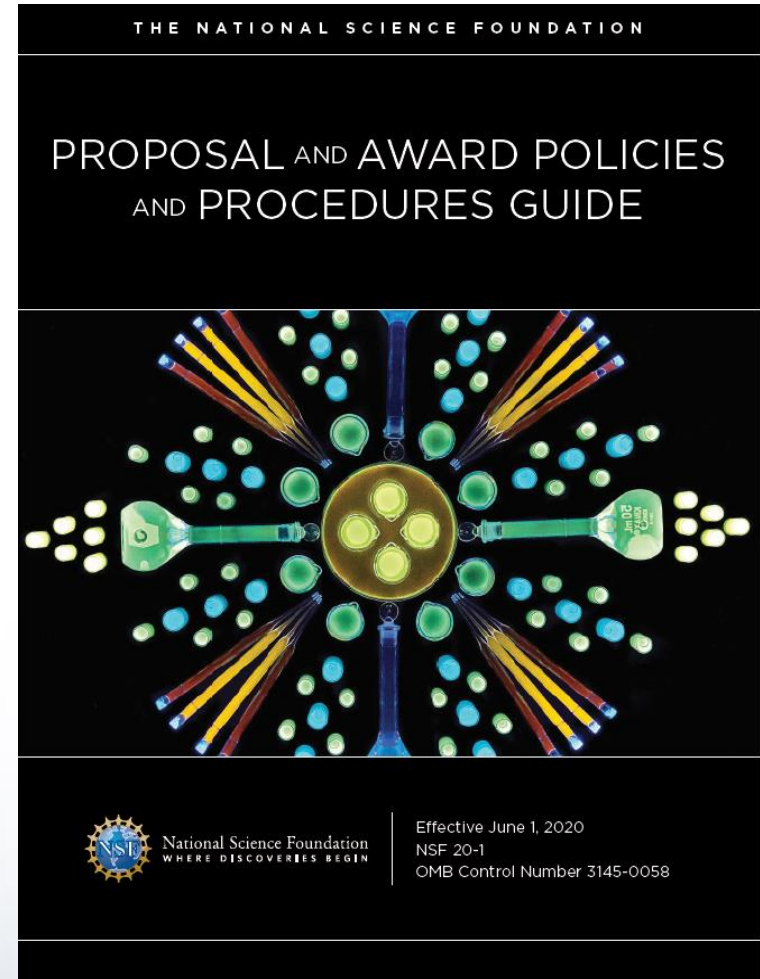
- Head, Policy Office
- Division of Institution & Award Support
- Office of Budget, Finance & Award Management
- policy@nsf.gov

Topics Covered

- Proposal & Award Policies & Procedures Guide (PAPPG) (NSF 20-1) Implementation
- Improved Transparency/Clarifications for Disclosure - Policy Implementation of the Biographical Sketch and Current & Pending Support sections of the proposal
 - PAPPG Disclosure Clarifications;
 - New NSF Term and Condition on Post-award Disclosure; and
 - Revised NSF Term and Condition on International Collaborations on Major Facilities.
- Research Performance Progress Report (RPPR) Changes
 - Require Updates of Other Active Support from PIs and co-PIs
 - Additional RPPR Questions and Changes
- Research.gov Sign-In Changes

PAPPG (NSF 20-1) Implementation

- NSF delayed implementation of the PAPPG requirement to use NSF-approved formats for the biographical sketch and current and pending support
- NSF-approved formats will be required for proposals submitted or due, on or after **October 5, 2020**
- All other PAPPG changes were effective on **June 1, 2020**



PAPPG Disclosure Clarifications: Biographical Sketch

- NSF uses the biographical sketch to assess the capability of the individual to carry out the research as proposed.
- Appointments section must include any titled academic, professional, or institutional position whether or not payment is received
 - Senior personnel must identify all **current** domestic or foreign “professional appointments” outside of the individual’s academic, professional, or institutional appointments at the proposing organization
- See PAPPG (NSF 20-1), Chapter II.C.2.f



PAPPG Disclosure Clarifications: Current & Pending Support

- NSF uses the information to assess the capacity of the individual to carry out the research as proposed as well as to help assess any potential overlap/duplication
- Information must be provided for all current and pending support irrespective of whether such support is provided through the proposing organization or directly to the individual
- Project or in-kind contributions without a time commitment are not required to be reported in Current and Pending Support
- See PAPPG, Chapter II.C.2.h

Policy Implementation

Current & Pending Support

- In-kind contributions that are intended for use on the project/proposal being proposed to NSF must be included as part of the Facilities, Equipment and Other Resources section of the proposal
- Information contained in current and pending support is separate and distinct from the information provided in the budget
- In-kind contributions that are not intended for use on the project and have no associated time commitment should not be reported in current and pending support

Policy Implementation

Current & Pending Support (Cont'd)

- Mentoring activities that take place as part of an individual's regular appointment at the proposing organization need not be reported
- “Research endeavors” refers to the endeavors ***of the particular individual***
- Consulting or professional service arrangements as defined in 2 CFR 200.459 are not identified as an example of a source of support in PAPPG Chapter II.C.2.h. that must be reported, as the type of work conducted is not typically considered to be at the same level of a proposal/project or in-kind contribution.
 - However, if the individual will be conducting research as part of the consulting agreement, then the consulting arrangement should be specified in the individual's current and pending support submission.

Post-award Disclosure

Current & Pending Support (Cont'd)

- A new term and condition on Post-award Disclosure of Current Support and In-Kind Contribution Information will be effective for all new awards and funding amendments to existing awards made on or after October 5, 2020.
- If an organization discovers that a PI or co-PI on an active NSF award failed to disclose current support or in-kind contribution information as part of the proposal, the AOR must submit detailed information within 30 days of its identification.
- The AOR must submit the information via the “Other Request” category in the Notification and Request Module in Research.gov.

Revised Term & Condition for International Collaborations on Major Facilities

- A revised term and condition for international collaborations on major facilities will be effective October 5, 2020 for cooperative agreement or cooperative support agreements for Major Multi-User Research Facility Projects and FFRDCs.
- Awardee must notify NSF of any new potential collaborations with non-U.S. organizations or governments.
- Awardee must provide a written list of all existing foreign collaborations with non-U.S. organizations

Research Performance Progress Report (RPPR) Updates

- The RPPR is a uniform format for reporting progress on Federally-funded research
- NSF awardees use the RPPR for the preparation and submission of annual and final project reports in Research.gov
- Beginning October 5, NSF will implement the revised RPPR format from the National Science and Technology Council (NSTC), which aims to reduce administrative burden for researchers

New Requirements in Annual and Final Project Reports

- PIs and co-PIs must notify NSF when active other support has changed since the award was made, or since the most recent annual report
 - An NSF-approved format for Current and Pending Support must be used to notify NSF in annual and final reports.
- Additional new questions from the approved RPPR. Awardees must:
 - Indicate the percentage of the award's budget that was spent in a foreign country;
 - Indicate if there's been a change in primary performance site location from that originally proposed; and
 - Provide details about the impact on teaching and educational experiences.
- All RPPR instructions have been harmonized with the Federal-wide standards approved by the NSTC
- NSF-specific instructions have been clarified and fine-tuned throughout
- Where possible, data entry fields have been consolidated to reduce burden

Adding Current and Pending Support to a Project Report

Edit Participant ⓘ

[< Back to Participants](#)

* Required fields

* First Name:

Middle Name:

* Last Name:

* E-mail Address:

* Most Senior Project Role:

* Nearest Person Month Worked: A person month equals approximately 160 hours of effort, regardless of funding source.

* Contribution to the Project:

* Funding Support: ⓘ

* Has there been a change in the active other support of the PI/PD(s) since the last reporting period? ☒ Yes ☐ No **2**

1 If you select Yes, you are required to upload your most updated Current and Pending Support document which includes other support since the last reporting period.

Please note: Current & Pending Support document must be submitted in an NSF-Approved Format. Failure to submit this document in an NSF-Approved Format will prevent your project report from being approved. Please see NSF Approved Format to complete the form.

Browse for file to upload **3** ⓘ NSF Specific

* Identify whether this person is collaborating internationally on this project: ☐ Yes ☒ No

Country(ies) of foreign collaborator: Required if yes

* Traveled internationally for this award: ☐ Yes ☒ No

1. Has there been a change to the active other support since the last reporting period?
2. If you select, "Yes" you will be required to upload your most up-to-date Current and Pending Support document.
3. The Current and Pending Support document must be submitted in an NSF-approved format.

Adding Current and Pending Support to a Project Report

Support: Testing

in the PD(s) period? ☒ Yes ☐ No

If you select Yes, you are required to upload your document which includes other support since the last reporting period. Please note: Current & Pending Support document to submit this document in NSF-Approved Format will prevent your project report from being accepted. Please see NSF Approved Format to complete the form.

Browse for file to upload

son is on this project: ☐ Yes ☒ No

erator: ^ Required if yes

AFGHANISTAN

ALAND ISLANDS

For NSF Specific Purposes, in the year one annual report has there been a change in current other support since the award was made. For subsequent annual reports has there been a change in current other support since the last reporting period.

NSF Specific

NSF-specific help text states:

For NSF-Specific Purposes, in the year one annual report has there been a change in current other support since the award was made. For subsequent annual reports has there been a change in current other support since the last reporting period.

Additional Changes to the RPPR

- Additional new questions from the approved RPPR
 - Indicate the percentage of the award's budget that was spent in a foreign country;
 - Indicate if there's been a change in primary performance site location from that originally proposed;
 - Provide details about the impact on teaching and educational experiences;
- All RPPR instructions have been harmonized with the Federal-wide standards enacted by the National Science and Technology Council (NSTC)
- NSF-specific instructions have been clarified and fine-tuned throughout
- Where possible, data entry fields have been consolidated to reduce burden

Research.gov Sign-in and Password Recovery with Primary Email Address

Research.gov
ONLINE GRANTS MANAGEMENT
FOR THE NSF COMMUNITY

Sign In | Register | Home | Contact | Help | About

NSF User Sign In

Use your Primary Email Address, NSF ID, or your organization credentials to sign in to Research.gov

Primary Email Address or NSF ID

[Forgot? / Look Up NSF ID](#)

Password [Forgot Password](#)

Sign In

New to NSF?
[Register](#)

Organization Credentials

Select your organization from the drop-down menu below, to be taken to the InCommon Log In page for your organization.

Pick Your Organization

Sign In

Don't see your organization listed?
[Learn more / Register for InCommon](#)

Research.gov
ONLINE GRANTS MANAGEMENT
FOR THE NSF COMMUNITY

Forgot Password

For Research.gov and FastLane

Please enter your Primary Email Address or NSF ID below.

[Forgot NSF ID](#)

☐ I'm not a robot

This reCAPTCHA is for testing purposes only. Please report to the site admin if you are seeing this.

Next **Cancel**

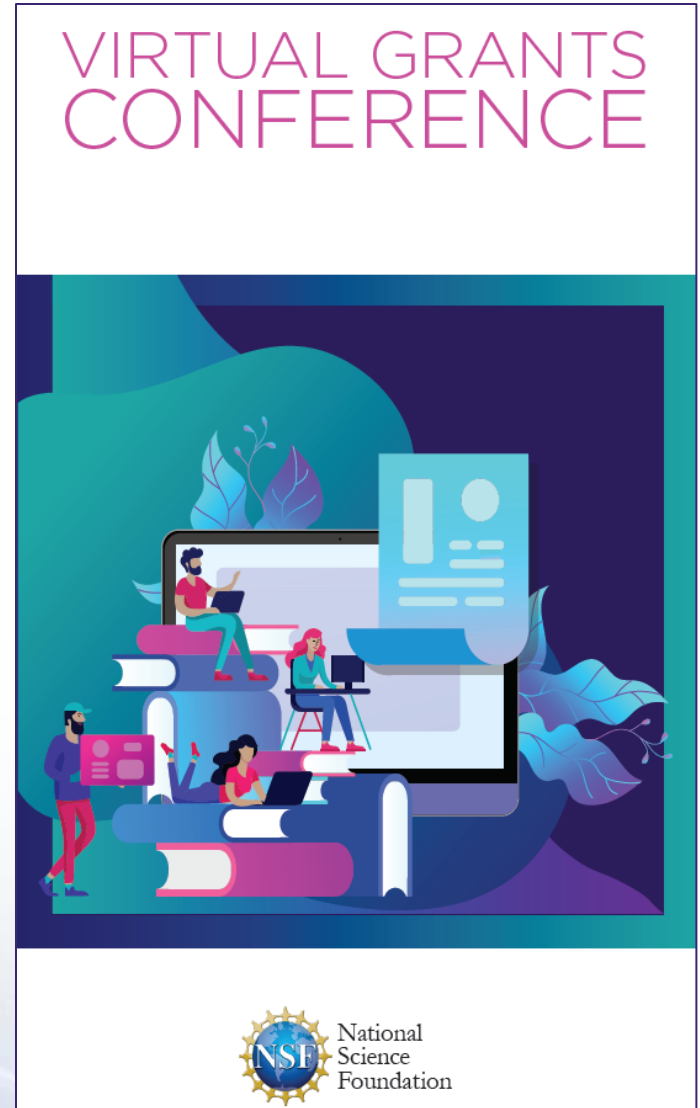
- Effective 9/28, the [Research.gov Sign-in page](#) will include three sign-in options:
 - Primary email address + password (**new option**)
 - NSF ID + password (**existing option**)
 - Organization-issued Credentials (InCommon Federation participating organizations only) (**existing option**)
- Also effective 9/28, users will be able to enter either their primary email address or their NSF ID for NSF account password recovery

Additional Sessions of Interest

- SciENCv: Tuesday @ 1:00
 - The panel will discuss SciENCv in advance of the October 5, 2020 requirement to use an NSF-approved format for the biographical sketch and current and pending support documents.
- Research.gov: Wednesday @ 11:00
 - An opportunity to hear about the latest enhancements to the Research.gov proposal submission system. This session will demonstrate NSF's user-friendly and intuitive proposal system.

Virtual NSF Grants Conference

- Conference to be held during the weeks of November 16th and November 30th.
- Sessions will be recorded and available on demand.
- Registration will be free of charge and will open on Thursday, October 29th.



For More Information:

Ask Early, Ask Often!

policy@nsf.gov



National Science Foundation

**WHERE DISCOVERIES
BEGIN**