

WORKING GROUP: COMPLIANCE UNIT STANDARD PROCEDURE (CUSP) SHARING SITE

Working Group Meeting
January 8, 2018



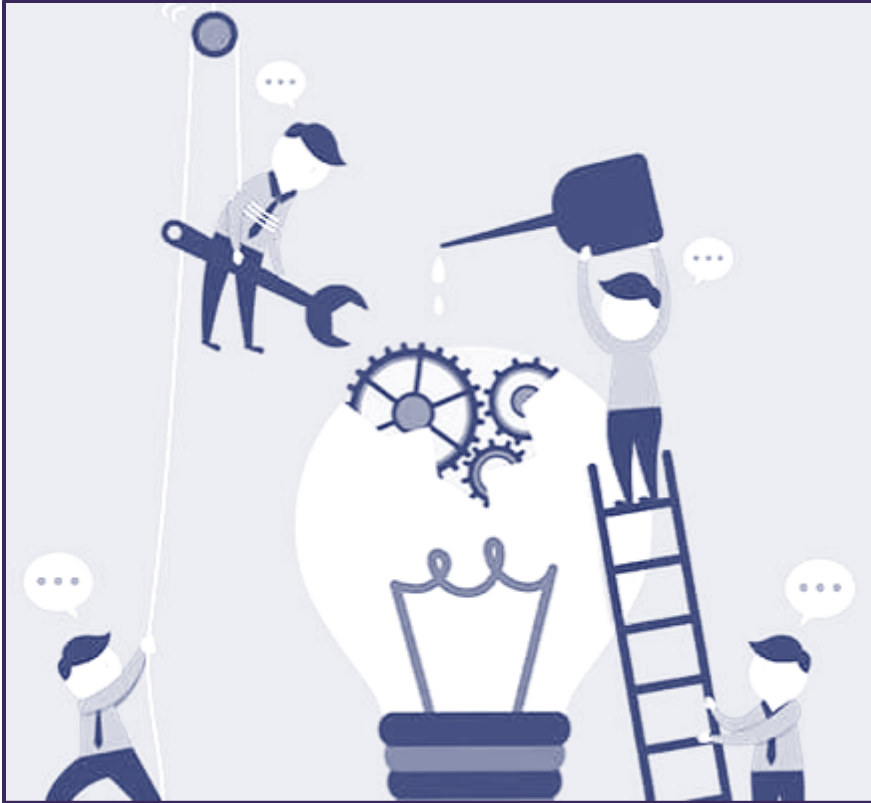
OFFICE OF ANIMAL WELFARE

Research Support Services

Agenda:

- Team Updates
- Discussion Topics
- Goals for February Meeting





Team Updates

1. **Data Storage & Maintenance**
– No updates this month
2. **Data Import & Export**
3. **Data Organization**

Suggested Procedure Types

Behavioral
Studies or
Testing

Blood or Tissue
Collection

Compound,
Agent or
Biologic
Administration

Diet
Modification

Euthanasia

Identification
and Genotyping

Imaging and
Recording

Induction and
Monitoring of
Illness

Irradiation

Surgery

Capture and
Trapping

SURVEY-DATA INPUT/OUTPUT

Given that we plan to start with a set of general procedure types, how much do we want to have sub-divisions of each procedure category?

Blood Collection

Multiple timepoints vs terminal bleeds
Require anesthesia vs no anesthesia

Retro orbital

Tail vein

Chin bleed

Jugular vein

Cardiac
puncture

Behavioral Testing

Divide tests by function: cognitive, motor, pain, vision, hearing, etc.

Rotarod

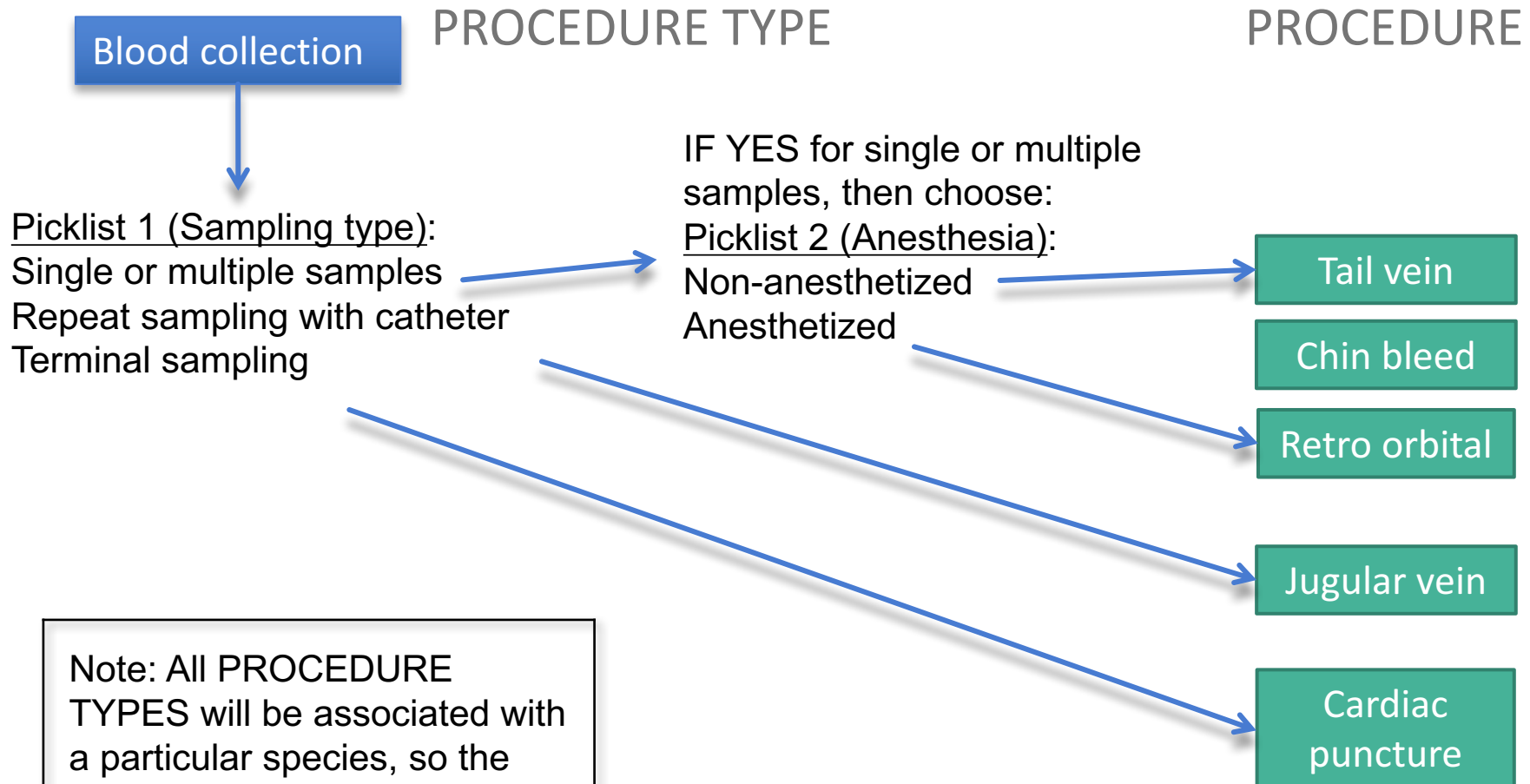
T-maze

Barnes maze

Open field

Von Frey test

Survey Question 1: Do you prefer this (one or two pick-lists first)....or a list of the Top 20 Procedures within each Procedure Type?



Note: All PROCEDURE TYPES will be associated with a particular species, so the Picklist choices will be specific to that species.

Behavioral Testing

Picklist 1: Functional area:

Cognitive tests

Anxiety/depression

Motor behavior

Pain and nociception

Vision

Hearing

Picklist 2: Motivation:

Without shock

With shock

Without food/water deprivation

With food/water deprivation

Morris Water
Maze

Barnes Maze

T-Maze

Rotarod

Gait Analysis

Open Field

Pellet
Reaching

Montoya
Staircase Test

Note: If we wanted to list the Top 20 procedures for more complex areas, Procedure Types could be more granular such as Behavioral Testing-Cognition, Behavioral Testing-Anxiety, etc.

Advantages/Disadvantages of Picklists vs Top 20

Advantages of picklists/disadvantages of Top 20:

1. Easier to find the exact procedure you seek more quickly using multiple picklists due to organization
2. Procedure name is pre-defined so there won't be multiple entries for the same procedure with slightly differing names (e.g., T-maze with food deprivation, no shock).
3. If there is a Top 20, there will be many in the "Other" category.

Disadvantages of picklists/advantages of Top 20:

1. Top 20 will simplify the lists of procedures and consolidate the database to those most often used.
2. Data input via bulk upload is probably less complex

Survey Question 2: For the pilot project, should we

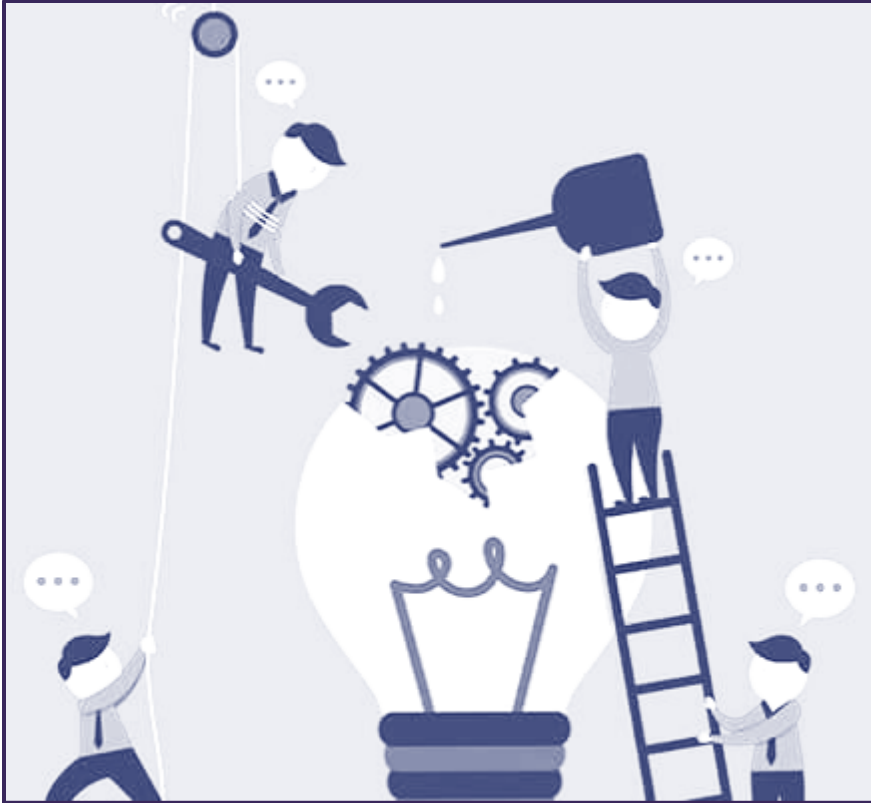
a) start small with a mixture of manually entered data and a few procedures uploaded from several electronic databases to see the scope of the project BEFORE proceeding with the full scope of the data input? That might help with determining the picklists....

OR

b) move things along by making our best guesses as to the likely categories for the picklists or pick the top 20 procedures for each category based on articles in the literature and team input?

THESE CONSIDERATIONS ARE IMPORTANT BECAUSE IT'S BEST TO DETERMINE THE MOST COMPLEX SCENARIO UPFRONT AND BUILD OUT THE SYSTEM BASED ON THAT THAN TO ADD ON LATER.

Note that each species or species type (e.g., rodents, ruminants, fish, etc.) should have picklists or a top 20 list that are particular to their needs for each procedure type. This complicates the process. Recommend that there are sub-committees with species-specific expertise that tackle this for each species or species type, with input from the data organization team.



Team Updates

1. Data Storage & Maintenance
 2. Data Import & Export
 3. Data Organization
-

Organization of Species

Amphibians

Bats

Birds

Carnivores

Fish

Insectivores

Lagomorphs

Livestock

Marsupial

Primates

Reptiles

Rodents



Organization of Procedure Types

**Behavioral
Studies or
Testing**

**Blood or Tissue
Collection**

**Compound,
Agent or
Biologic
Administration**

**Diet
Modification**

Euthanasia

**Identification
and Genotyping**

**Imaging and
Recording**

**Induction and
Monitoring of
Illness**

Irradiation

Surgery

**Capture and
Trapping**



Sub-threshold	Non-recovery
Mild	Reducing suffering
Moderate	
Severe	

Discussion Topic: Identifying Contributing Institution

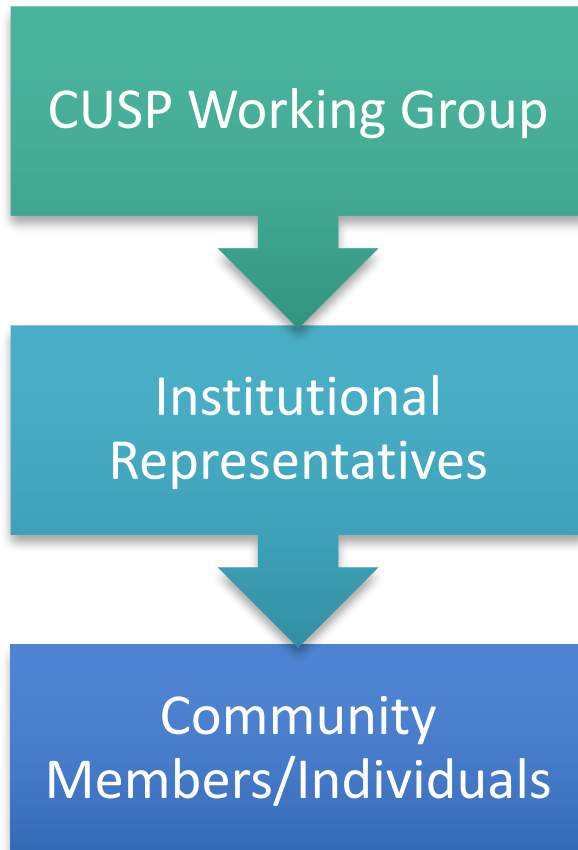
Questions: Do institutions want to be identified at the procedure level? Site level? Not at all?

Proposal: The name of the contributing institution would be part of the metadata that is collected when a procedure is submitted, however, institutions could decide if this information is displayed to all users.

If the institution chooses not to have their name displayed, the phrase “Institution Not Identified” would display in the field instead.



Discussion Topic: Managing Site Access (Follow Up)

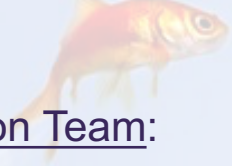


Question: Should there be a requirement that each individual have their own account?

Alternate approaches proposed:

- (A) An institution has a single account that all users at that institution use to access the site.
- (B) Allow both options; institutions can determine how they want to manage access locally.

Goals for February Meeting

- 
- Aubrey/UW:
 - Data Organization Team:
 - Data Import & Export Team: Send survey to working group and collect data to share at next meeting.
 - Data Storage Team: Update business process maps based on feedback from December meeting/Trello board.

Proposed Agenda Topics for February:

- Email Aubrey (aubreys@uw.edu) if you'd like to add a topic to the agenda.
-



Next Meeting:
February 8, 2018 at 12:00 pm PST

Save the Date

- System requirements – working group members only – January 8, 3:50 - 5:00pm, Congressional C/D
 - PRIM&R IACUC Conference (March 19-21) – Session E4, March 21, 1:45 – 3:00pm
 - Interest in working group session at PRIM&R?
-