

# GUIRR UPDATE

Meeting of the Federal Demonstration Partnership (FDP)

**Susan Sloan**  
Director, GUIRR  
May 10, 2018



Government | University | Industry

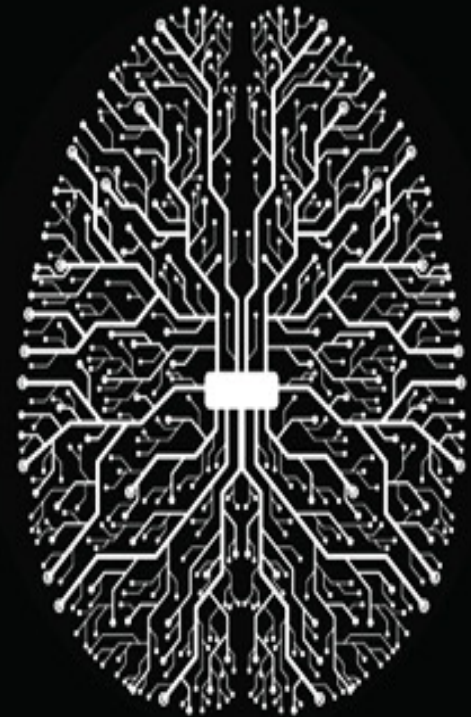
RESEARCH ROUNDTABLE

Policy and Global Affairs Division

# First meeting of 2018

## ARTIFICIAL INTELLIGENCE & MACHINE LEARNING TO ACCELERATE TRANSLATIONAL RESEARCH

February 13-14, 2018  
National Academy of Sciences Building  
Washington, DC 20418



GOVERNMENT-UNIVERSITY-INDUSTRY RESEARCH ROUNDTABLE

*The National Academies of*  
SCIENCES • ENGINEERING • MEDICINE

# We considered:

- (1) The history and new challenges of commercializing AI applications in biomedicine
- (2) What bio and pharma companies can learn from other sectors' applications of emerging AI
- (3) How to best balance risk with reward: What regulatory and ethical issues need to be taken into consideration
- (4) How to think about preparing a qualified workforce to meet the challenges

GOVERNMENT-UNIVERSITY-INDUSTRY RESEARCH ROUNDTABLE

---

# Opening Keynote Address



Dr. Oren Etzioni  
Chief Executive Officer  
Allen Institute for Artificial Intelligence

GOVERNMENT-UNIVERSITY-INDUSTRY RESEARCH ROUNDTABLE

*The National Academies of*  
SCIENCES • ENGINEERING • MEDICINE

# Coming up!

An abstract graphic featuring a network of interconnected nodes and lines. The left side is a solid purple shape, while the right side is white with a faint, light-gray network pattern. The text is overlaid on the purple shape.

## STRATEGIES FOR ENGAGEMENT OF NON-TRADITIONAL PARTNERS IN THE RESEARCH ENTERPRISE

June 12-13, 2018  
National Academy of Sciences Building  
Washington, DC 20418

GOVERNMENT-UNIVERSITY-INDUSTRY RESEARCH ROUNDTABLE

*The National Academies of*  
SCIENCES • ENGINEERING • MEDICINE

# We will consider:

- (1) How and why might universities, industry, and the federal government engage with non-traditional (outside of the Triple Helix model) partners such as private foundations, disease-specific advocacy groups, NGOs, angel and venture capital groups?
- (2) Do these non-traditional partners offer enough space for investigator-initiated research and basic research?
- (3) How do focused funding strategies impact the research enterprise, in terms of workforce development, research focus of individual investigators, and leveraging other federal and commercial research funds?

GOVERNMENT-UNIVERSITY-INDUSTRY RESEARCH ROUNDTABLE

---

# GUIRR Monthly Webinar Series

Webinars held in 2018 and since the last FDP meeting:

- January 17 – *Technology Transfer Evolution: Driving Economic Prosperity*
- February 27 – *Information Technology and the U.S. Workforce*
- March 23 – *Putting Science to Work for Women's Health*
- April 26 – *Journal of Science Policy and Governance*

GOVERNMENT-UNIVERSITY-INDUSTRY RESEARCH ROUNDTABLE

---

# Next Webinar

## *Connecting Research to Policy: The Broadband Research Initiative at Pew Charitable Trusts*

May 30, 2018  
1 p.m. EST

GOVERNMENT-UNIVERSITY-INDUSTRY RESEARCH ROUNDTABLE

---

*The National Academies of*  
SCIENCES • ENGINEERING • MEDICINE





# DATA MATTERS: Ethics, Data, and International Research Collaboration in a Changing World

March 14-16, 2018 | National Academy of Sciences Building | Washington, DC 20418

GOVERNMENT-UNIVERSITY-INDUSTRY RESEARCH ROUNDTABLE

*The National Academies of*  
SCIENCES • ENGINEERING • MEDICINE

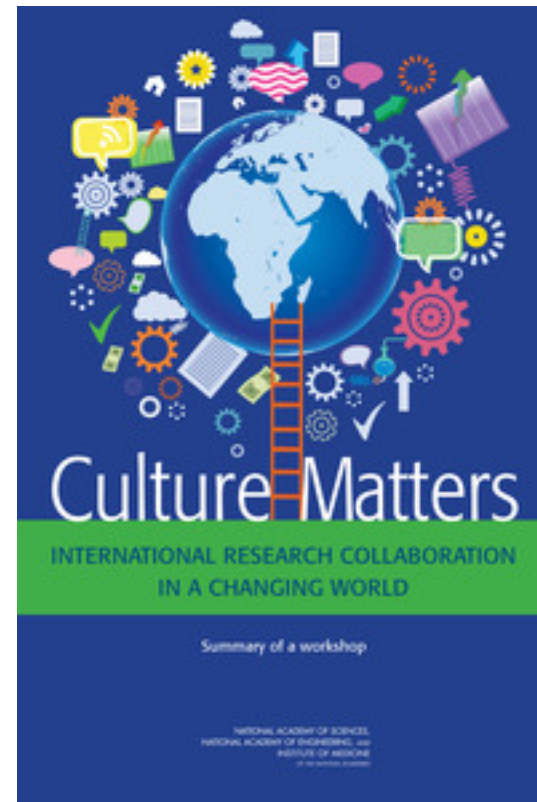
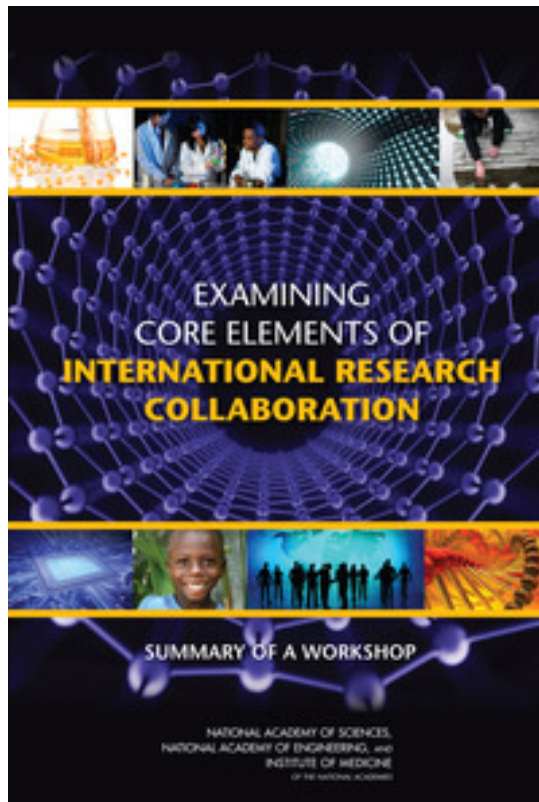
# DATA MATTERS

This workshop explored the changing opportunities and risks of data management and use across disciplinary domains to examine advisory principles for consideration when developing international research agreements, in the pursuit of highlighting promising practices for sustaining and enabling international research collaborations at the highest ethical level possible.

GOVERNMENT-UNIVERSITY-INDUSTRY RESEARCH ROUNDTABLE

---

*The National Academies of*  
SCIENCES • ENGINEERING • MEDICINE



## GOVERNMENT-UNIVERSITY-INDUSTRY RESEARCH ROUNDTABLE

*The National Academies of*  
SCIENCES • ENGINEERING • MEDICINE

# Thank you. Questions?

[ssloan@nas.edu](mailto:ssloan@nas.edu)

[mnicholson@nas.edu](mailto:mnicholson@nas.edu)

[cbaylor@nas.edu](mailto:cbaylor@nas.edu)

*[www.nas.edu/guirr](http://www.nas.edu/guirr)*

---

GOVERNMENT-UNIVERSITY-INDUSTRY RESEARCH ROUNDTABLE

*The National Academies of*  
SCIENCES • ENGINEERING • MEDICINE