



# Welcome!

## Welcome!

**Today's session will begin shortly.  
There will be no audio sound until  
the session begins.**



# Zoom Webinar Reminders

- Zoom technical support at 1-888-799-9666, option 2
- Audio streamed through your speakers
- Submit questions at any time in the Q&A box at the bottom of your screen
- Webinar recording, slides, and session summaries posted shortly after the event at **thefdp.org**



# FEDERAL DEMONSTRATION PARTNERSHIP

Redefining the Government & University Research Partnership

## Plenary - COVID Federal Panel (Issues and Opportunities)

**Plenary:** Dr. Mike Lauer (NIH)

**Panelists:** Barbara Orlando (DoD), Michelle Bulls (NIH) &  
Dr. Stephen Meacham (NSF)

Moderator: Jim Luther (Duke)

Q&A Moderator: Alex Albinak (Johns Hopkins)

**May 27, 2020 (1:00 – 3:00 EST)**



# COVID Federal Panel

- Dr. Mike Lauer (NIH) will serve as the plenary speaker to discuss NIH's perspective on a strategic response to COVID-19 and how institutions may develop strategies to restart all aspects of research as they encounter related pauses, ramping up, or even ramping down research over the coming months. Following the plenary session, a panel of federal agency representatives will provide their perspectives and challenges that may help institutions understand how to leverage the FDP partnership to accomplish the agencies' priorities in a manner that is most effective and least burdensome to faculty and the research mission.



# Plenary Speaker and Panelists

- Plenary

- Dr. Mike Lauer, NIH Deputy Director for Extramural Research

- Panelists

- Barbara Orlando, DoD Grants Policy Manager
- Michelle Bulls, Director of the NIH Office of Policy for Extramural Research Administration (OPERA)
- Dr. Stephen Meacham, NSF Section Head, Integrative Activities

- Moderators

- Jim Luther (Duke University)
- Alex Albinak (Johns Hopkins)



# Session Overview

- Welcome and Introductions
- Plenary: Dr. Mike Lauer -- 40 minutes (~25 minutes presentation + 15 minutes Q&A)
  - Presentation
  - Q&A
- Federal Panel: Barbara Orlando, Michelle Bulls, & Dr. Stephen Meacham
  - Welcome & Introductions
  - Panelist presentations
  - Moderated discussion
  - Q&A – Moderated with Alex Albinak (JHU)



# Thought Exchange

- “Given the COVID-19 pandemic’s impact to research, what would you be interested in hearing about from NIH, NSF and DOD? [If your comment is focused on a specific agency please specify which agency in your thoughts].”

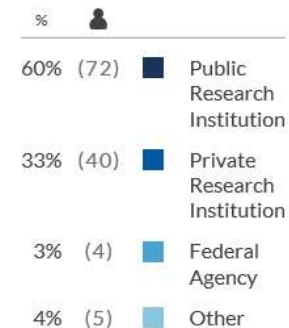
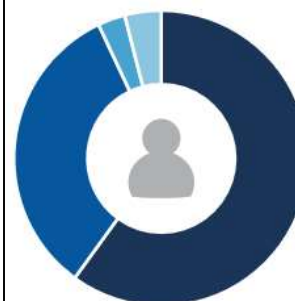


# Response Summary

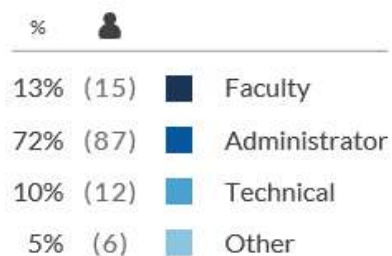
## Responses



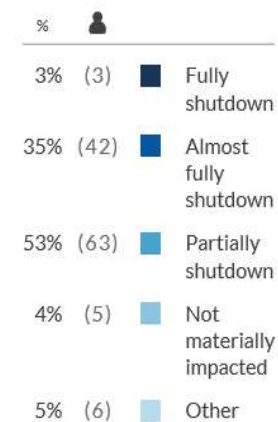
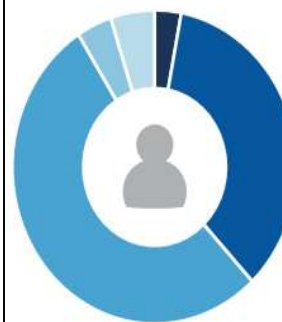
## Type of Institution



## Role at Institution



## Status of Research







# Response Summary

## Responses

 129  
Participants

 74  
Thoughts

 2166  
Ratings



52  
Participants shared  
thoughts



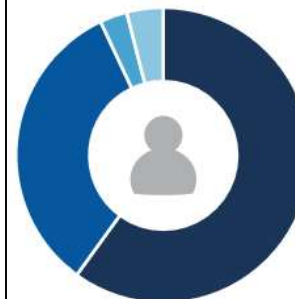
77  
Participants rated  
thoughts



78  
Participants explored  
thoughts

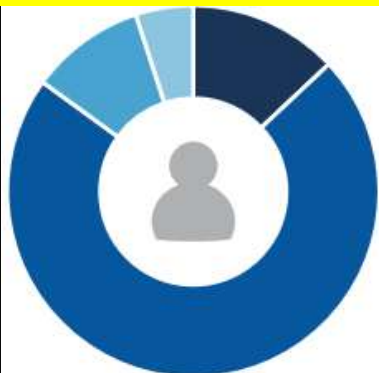


## Type of Institution



%		
60%	(72)	Public Research Institution
33%	(40)	Private Research Institution
3%	(4)	Federal Agency
4%	(5)	Other

## Role at Institution



%		
13%	(15)	Faculty
72%	(87)	Administrator
10%	(12)	Technical
5%	(6)	Other

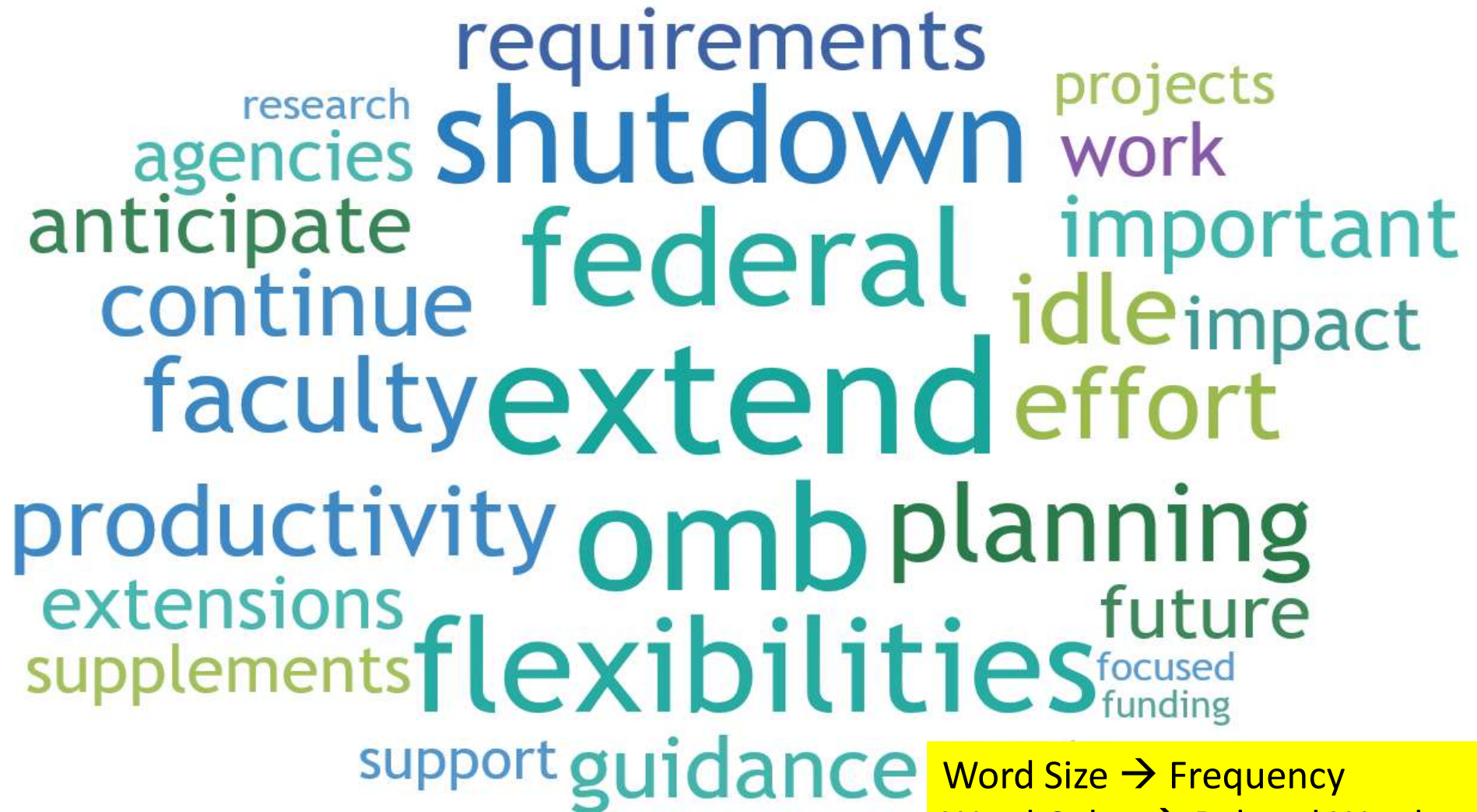
## Status of Research



%		
3%	(3)	Fully shutdown
35%	(42)	Almost fully shutdown
53%	(63)	Partially shutdown
4%	(5)	Not materially impacted
5%	(6)	Other



# Word Cloud – Areas of Interests




Word Size → Frequency

Word Color → Related Words



# Themes

- Extension of OMB & Agency/Sponsor Flexibility
- Non-Productive Time Tracking & Implications
- Potential for Loss of Funds / Research Progress (Programmatic Concerns)
- Audit Concerns – Current & Future
- Supplemental Funding Opportunities
- RPPR Reporting / Grant by grant reporting requirements
- Consistency / Harmonization of Regulations
- Burden (Bandwidth / Delay NSF C&P and NIH OS)
- Support for Graduate Student/PhD/Early Career Faculty
- Post COVID Ops / Restart



# COVID-19 Implications for Biomedical Research and Information for NIH Applicants and Recipients of Funding

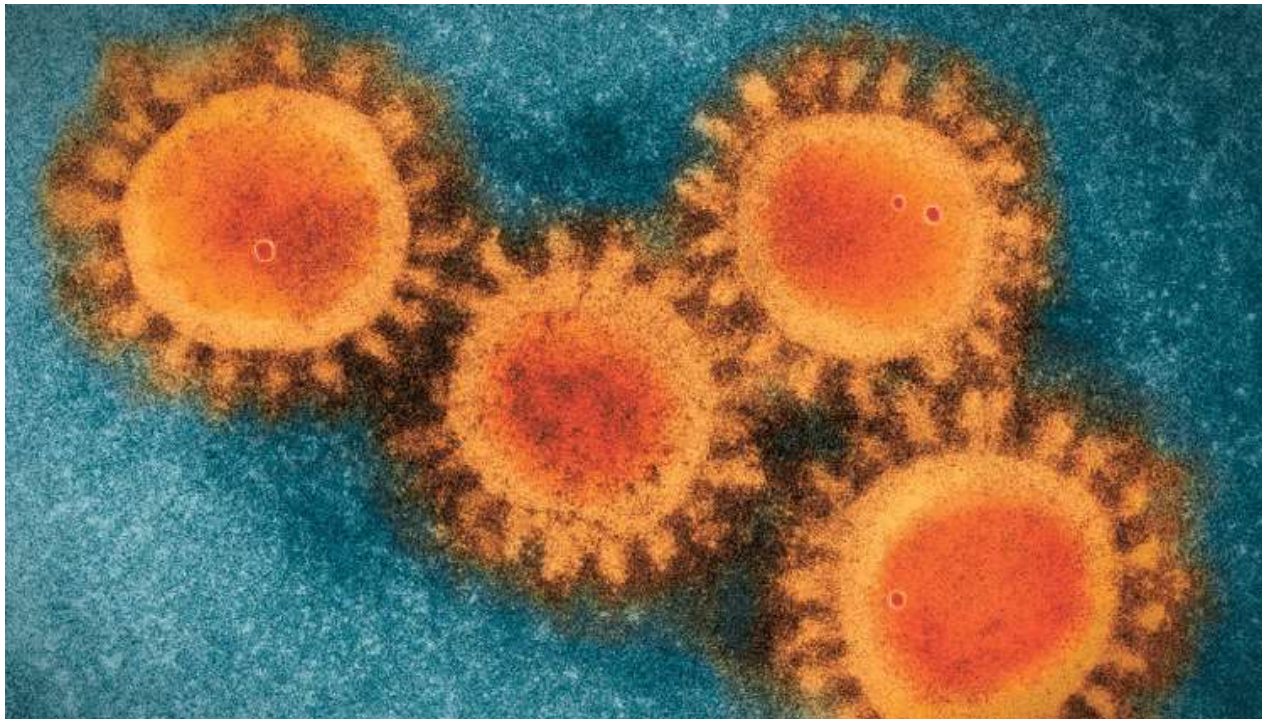
Michael S Lauer, MD  
NIH Deputy Director for Extramural Research

FDP Plenary (Virtual)  
May 27, 2020

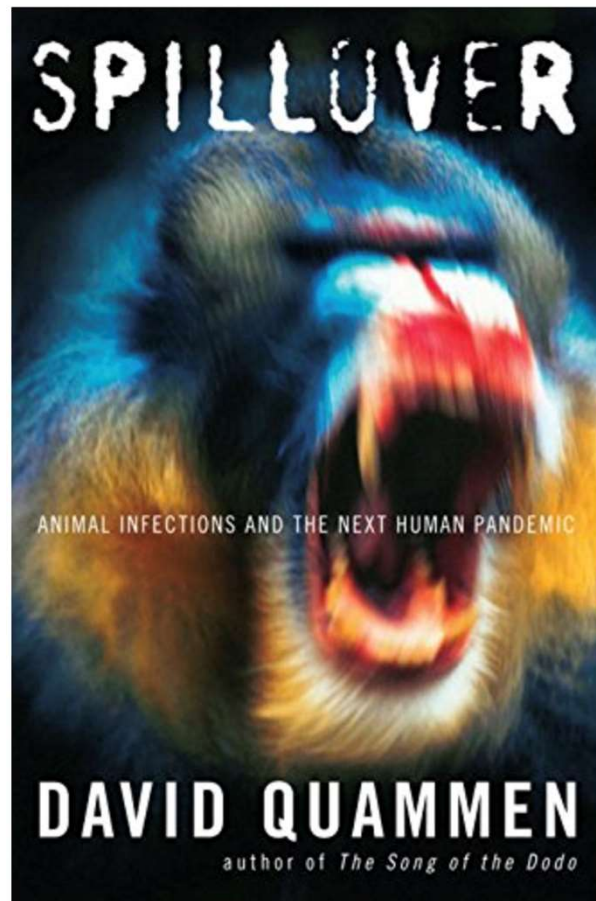




# A “Novel” Virus



<https://jamanetwork.com/collections/46099/coronavirus-covid19>



nature > news > article

a natureresearch journal

nature

Subscribe

Search

Login

NEWS · 14 APRIL 2020

## Bats are a key source of human viruses — but they're not special

Statistical analyses suggest that surveillance efforts for the next pandemic look beyond the flying mammals.

Clare Watson



Bats host several viruses that cause severe disease in people. Credit: Stephen Belcher/Minden Pictures/FLPA

### RELATED ARTICLES

Coronavirus and COVID-19:  
Keep up to date



Mystery deepens over animal  
source of coronavirus



Should scientists infect  
healthy people with the  
coronavirus to test vaccines?



Coronavirus can infect cats —  
dogs, not so much



<https://www.nature.com/articles/d41586-020-01096-z>

# Novel coronavirus thought to have jumped to humans via pangolins

Trafficked scaly anteaters found to carry coronaviruses related to SARS-CoV-2

by *Laura Howes*

APRIL 3, 2020 | APPEARED IN **VOLUME 98, ISSUE 13**

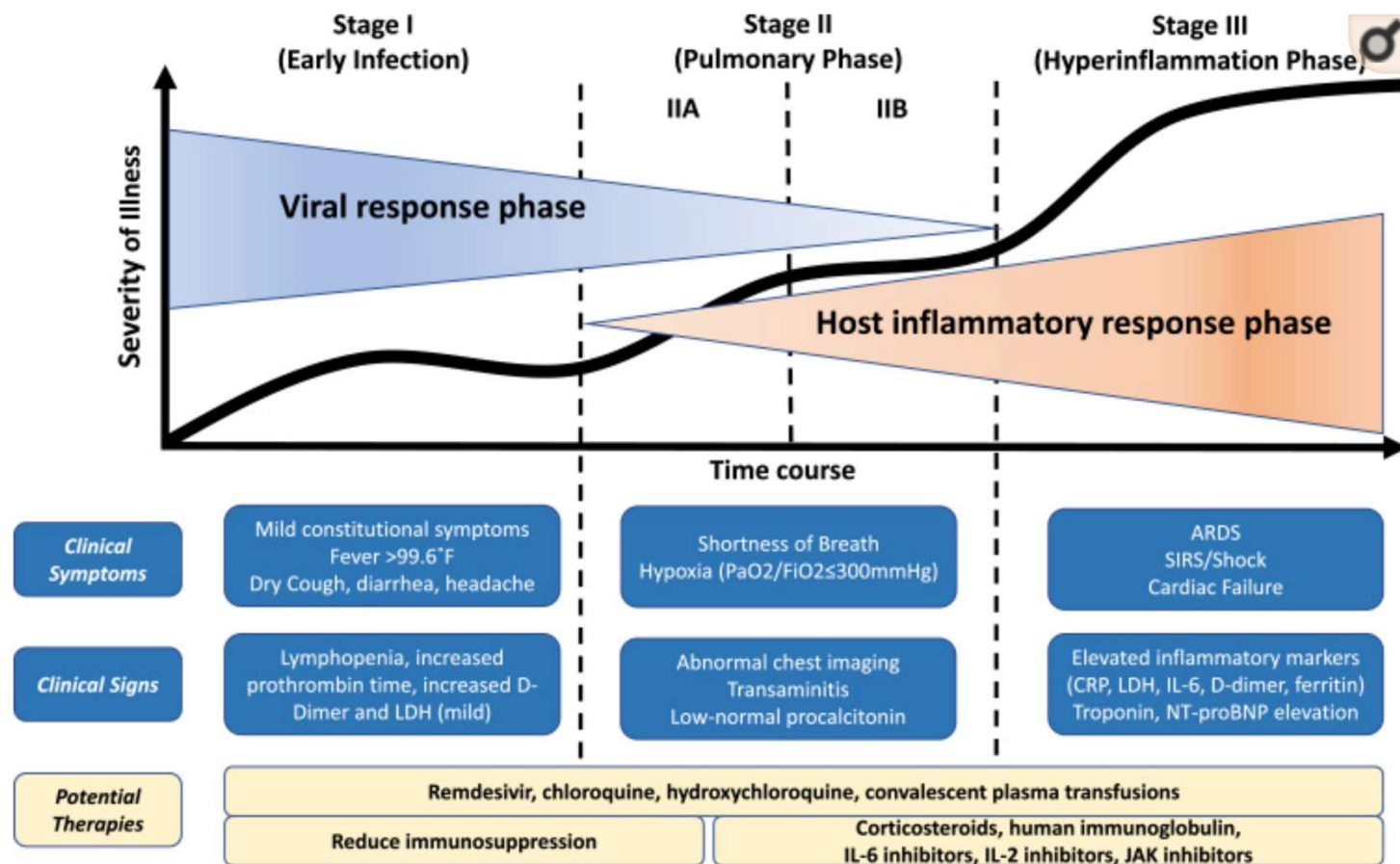
**S**ince the novel coronavirus, SARS-CoV-2, was first detected late last year, researchers have been trying to understand how the virus passed to humans in the first place. Although bats are thought to be the origin of the virus, bat coronaviruses differ from SARS-CoV-2 in some key ways. In particular, **the spike proteins**, which bind to receptors on the surface of cells to gain access, are different in the two viruses. Authorities in China quickly shut down a market linked to the outbreak. Closing the



ADVERTISE

<https://cen.acs.org/biological-chemistry/infectious-disease/Novel-coronavirus-thought-jumped-humans/98/i13>





Siddiqi and Mehra. <https://www.ncbi.nlm.nih.gov/pmc/articles/PMC7118652/>



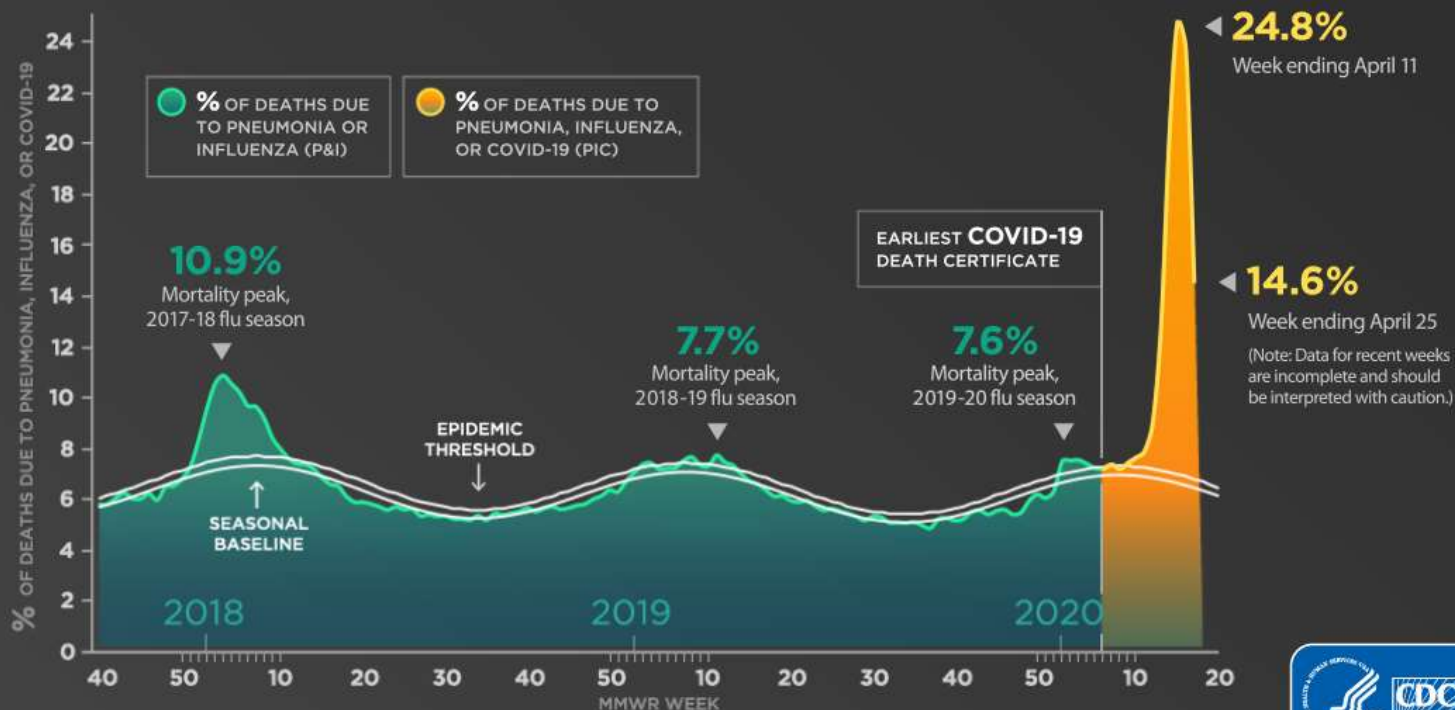
# Interesting Features of COVID-19

- Highly contagious ( $R_0 \sim 2.5$  to 3.0)
- Often asymptomatic; strange symptoms (e.g. loss of smell)
- “Cytokine storm” leading to respiratory, multisystem failure
- Hypercoagulability
- Extra-pulmonary complications (e.g. CNS, CVS, even toes)
- Disproportionate effects on URM, elderly, chronic disease
- Kawasaki-like illness in children

NATIONAL CENTER FOR HEALTH STATISTICS (NCHS) MORTALITY REPORTING SYSTEM

## U.S. Mortality: Death Certificates Listing Pneumonia, Influenza, and COVID-19

DATA THROUGH WEEK ENDING APRIL 24, 2020\*



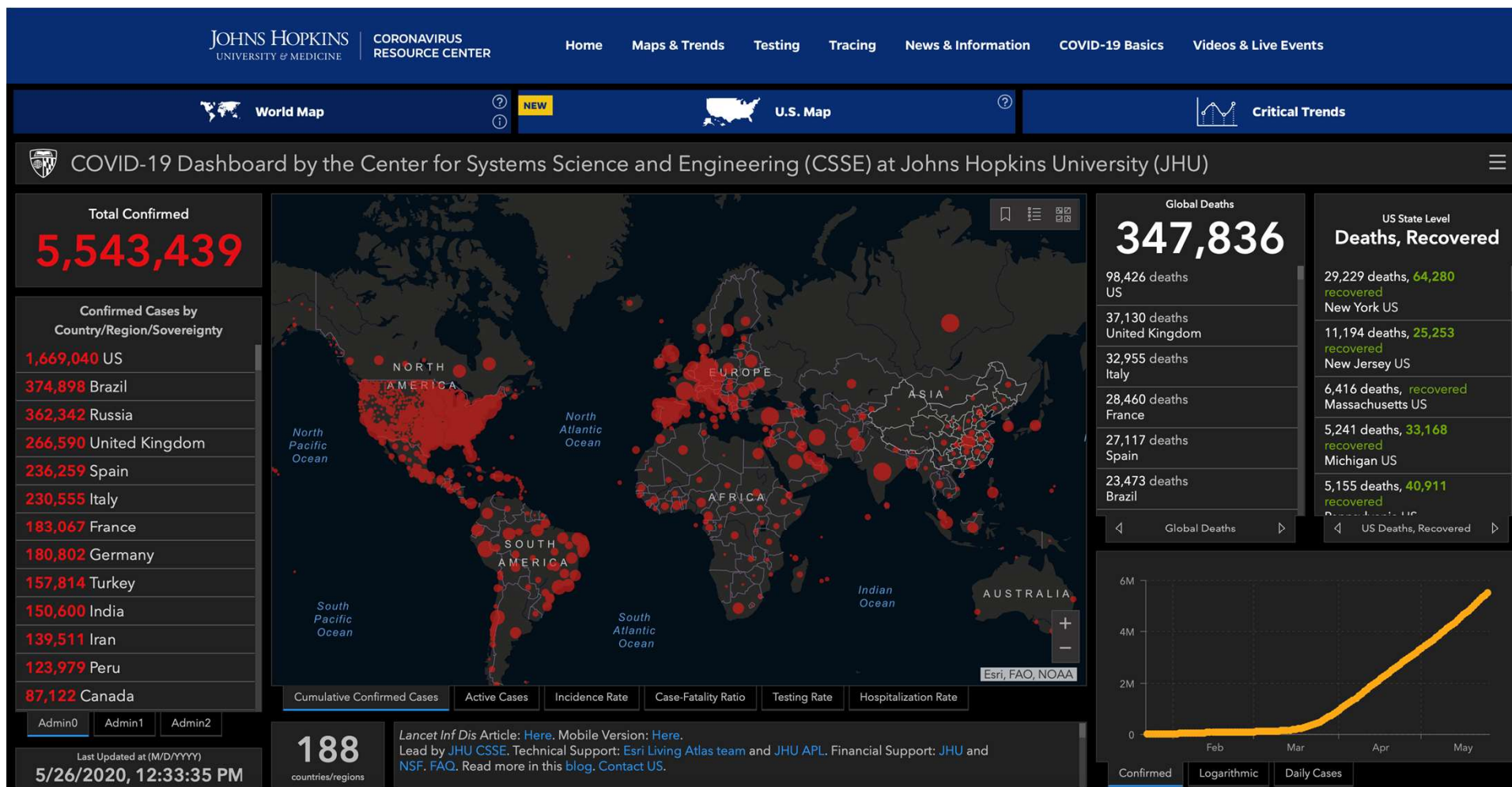
\*Data are preliminary and may change as more reports are received.

[cdc.gov/coronavirus](https://cdc.gov/coronavirus)

For more NCHS COVID-19 mortality info, see <https://www.cdc.gov/nchs/nvss/vsrr/covid19/index.htm>

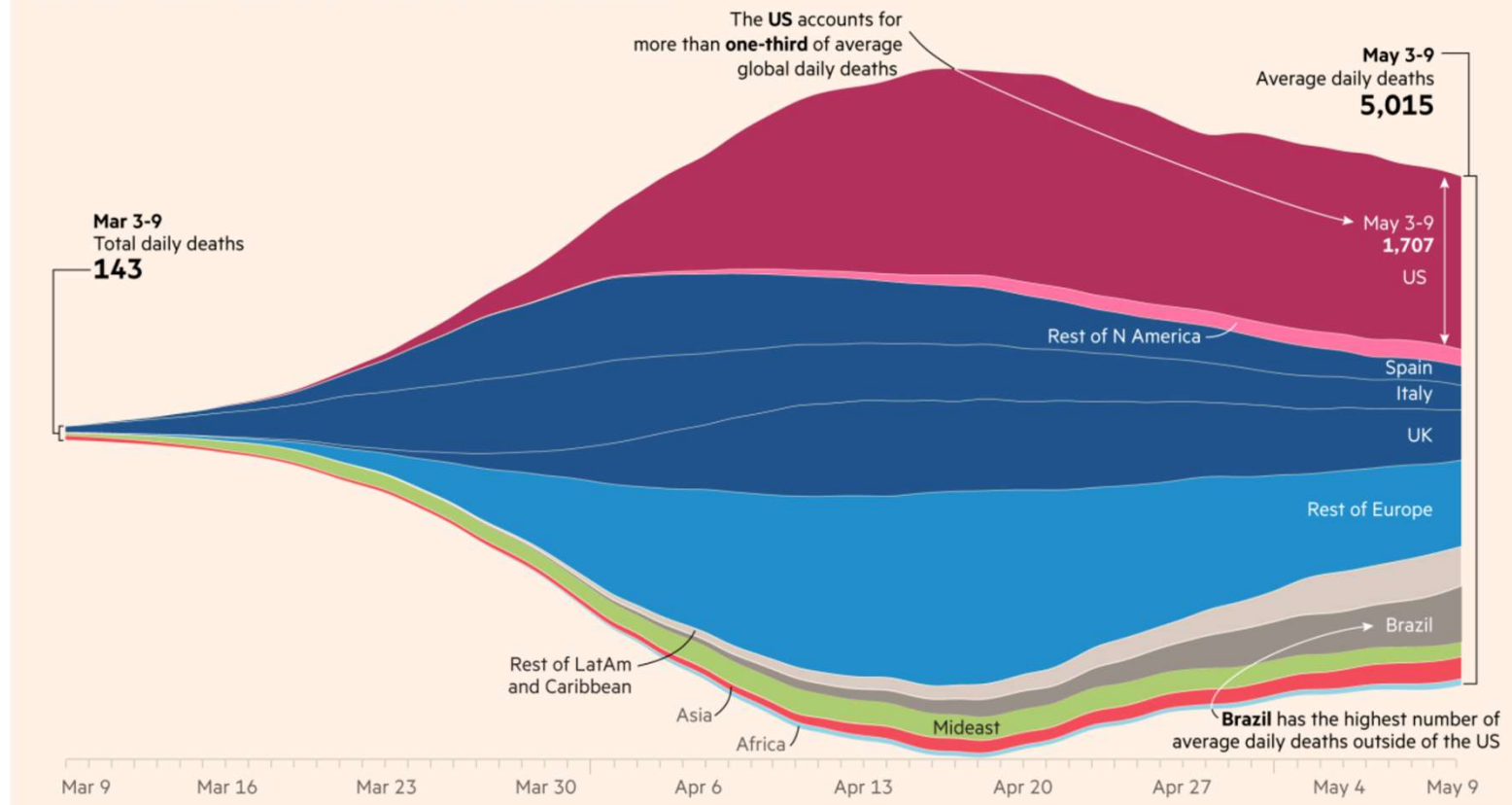


CS316472



## The global Covid-19 death toll is finally easing

Daily deaths of patients diagnosed with coronavirus (7-day rolling average)



<https://www.ft.com/content/a26bf7e-48f8-11ea-aeb3-955839e06441>

# NIH Efforts

The image displays two overlapping screenshots of the National Institutes of Health (NIH) website. The top screenshot shows a news release dated Friday, April 17, 2020, titled "NIH to launch public-private partnership for COVID-19 vaccine and treatment options". The bottom screenshot shows a news release dated Wednesday, April 29, 2020, titled "NIH mobilizes national innovation initiative for COVID-19 diagnostics". Both screenshots feature the NIH logo, a search bar, and a navigation menu. The top screenshot also includes a red banner with the text "COVID-19 is an emerging, rapidly evolving situation." and links to the latest public health information from the CDC and the latest research information from NIH. The bottom screenshot includes a sidebar with links to the NIH Office of the Director (OD), Contact information for the NIH Office of Communications, and a section to connect with the NIH.

**NIH** National Institutes of Health  
Turning Discovery Into Health

Search NIH

NIH Employee Intranet | Staff Directory | En Español

Health Information | Grants & Funding | News & Events | Research & Training | Institutes at NIH | About NIH

**COVID-19 is an emerging, rapidly evolving situation.**

Get the latest public health information from CDC: <https://www.coronavirus.gov>  
Get the latest research information from NIH: <https://www.nih.gov/coronavirus>

Home » News & Events » News Releases

**NEWS RELEASES**

Friday, April 17, 2020

**NIH to launch public-private partnership for COVID-19 vaccine and treatment options**

*Health agencies, leading pharmaceutical companies to join for response.*

**NIH** National Institutes of Health  
Turning Discovery Into Health

Search NIH

NIH Employee Intranet | Staff Directory | En Español

Health Information | Grants & Funding | News & Events | Research & Training | Institutes at NIH | About NIH

**COVID-19 is an emerging, rapidly evolving situation.**

Get the latest public health information from CDC: <https://www.coronavirus.gov>  
Get the latest research information from NIH: <https://www.nih.gov/coronavirus>

Home » News & Events » News Releases

**NEWS RELEASES**

Wednesday, April 29, 2020

**NIH mobilizes national innovation initiative for COVID-19 diagnostics**

*Initiative aims to speed delivery of accurate, easy-to-use, scalable tests to all Americans.*

[Facebook](#) [Twitter](#) [LinkedIn](#) [YouTube](#) [Instagram](#)

**Institute/Center**  
[NIH Office of the Director \(OD\)](#)

**Contact**  
[NIH Office of Communications](#) 301-496-5787

**Connect with Us**



# COVID-19 Funding Opportunities

- Funding through competing supplements, administrative supplements, new awards
- Many opportunities listed on [Coronavirus Disease 2019 \(COVID-19\): Information for NIH Applicants and Recipients of NIH Funding](#) website



# Rapid Execution and Reports

*The NEW ENGLAND JOURNAL of MEDICINE*

## ORIGINAL ARTICLE

### Remdesivir for the Treatment of Covid-19 — Preliminary Report

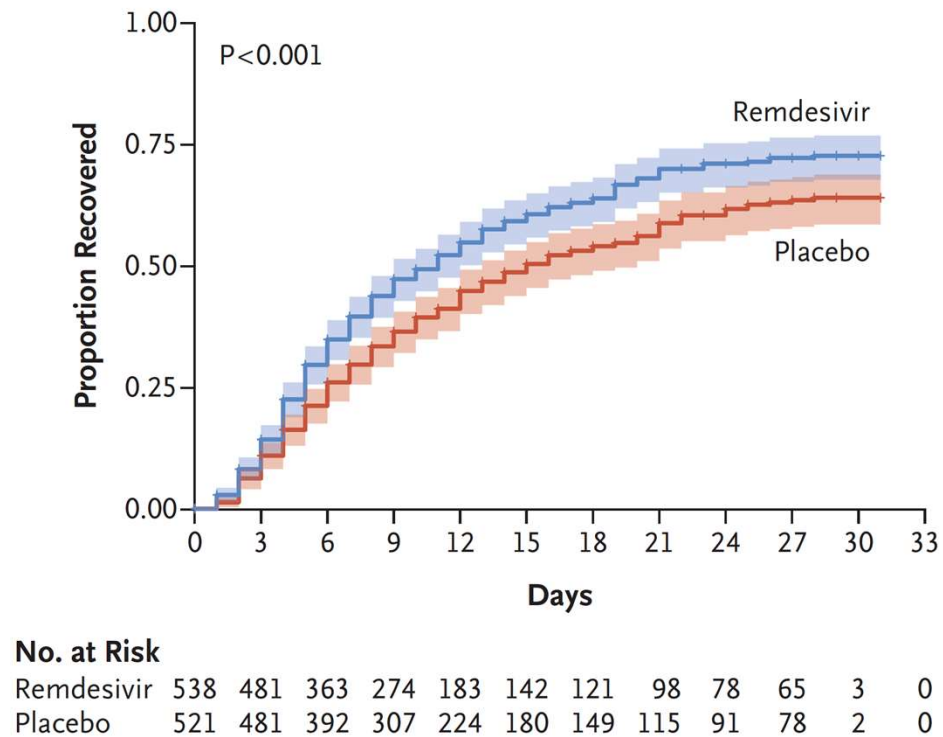
J.H. Beigel, K.M. Tomashek, L.E. Dodd, A.K. Mehta, B.S. Zingman, A.C. Kalil, E. Hohmann, H.Y. Chu, A. Luetkemeyer, S. Kline, D. Lopez de Castilla, R.W. Finberg, K. Dierberg, V. Tapson, L. Hsieh, T.F. Patterson, R. Paredes, D.A. Sweeney, W.R. Short, G. Touloumi, D.C. Lye, N. Ohmagari, M. Oh, G.M. Ruiz-Palacios, T. Benfield, G. Fätkenheuer, M.G. Kortepeter, R.L. Atmar, C.B. Creech, J. Lundgren, A.G. Babiker, S. Pett, J.D. Neaton, T.H. Burgess, T. Bonnett, M. Green, M. Makowski, A. Osinusi, S. Nayak, and H.C. Lane, for the ACTT-1 Study Group Members\*

## ABSTRACT

### BACKGROUND

[https://www.nejm.org/doi/full/10.1056/NEJMoa2007764?query=featured\\_home](https://www.nejm.org/doi/full/10.1056/NEJMoa2007764?query=featured_home)

# Primary Outcome



[https://www.nejm.org/doi/full/10.1056/NEJMoa2007764?query=featured\\_home](https://www.nejm.org/doi/full/10.1056/NEJMoa2007764?query=featured_home)



# Next Question ...

## NEWS RELEASES

Wednesday, April 29, 2020

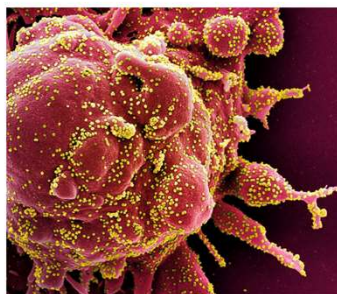
### NIH clinical trial shows Remdesivir accelerates recovery from advanced COVID-19



Hospitalized patients with advanced COVID-19 and lung involvement who received remdesivir recovered faster than similar patients who received placebo, according to a preliminary data analysis from a randomized, controlled trial involving 1063 patients, which began on February 21. The trial (known as the [Adaptive COVID-19 Treatment Trial](#), or ACTT), sponsored by the [National Institute of Allergy and Infectious Diseases \(NIAID\)](#), part of the National Institutes of Health, is the first clinical trial launched in the United States to evaluate an experimental treatment for COVID-19.

An independent data and safety monitoring board (DSMB) overseeing the trial met on April 27 to review data and shared their interim analysis with the study team. Based upon their review of the data, they noted that remdesivir was better than placebo from the perspective of the primary endpoint, time to recovery, a metric often used in influenza trials. Recovery in this study was defined as being well enough for hospital discharge or returning to normal activity level.

Preliminary results indicate that patients who received remdesivir had a 31%



Colorized scanning electron micrograph of an apoptotic cell (red) heavily infected with SARS-CoV-2 virus particles (yellow), isolated from a patient sample. Image captured at the NIAID Integrated Research Facility (IRF) in Fort Detrick, Maryland. *NIAID*

## NEWS RELEASES

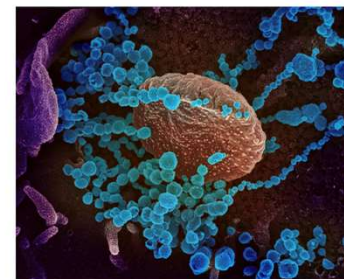
Friday, May 8, 2020

### NIH clinical trial testing antiviral remdesivir plus anti-inflammatory drug baricitinib for COVID-19 begins



A randomized, controlled clinical trial evaluating the safety and efficacy of a treatment regimen of the investigational antiviral remdesivir plus the anti-inflammatory drug baricitinib for coronavirus disease 2019 (COVID-19) has begun. The trial is now enrolling hospitalized adults with COVID-19 in the United States. The trial is expected to open at approximately 100 U.S. and international sites. Investigators currently anticipate enrolling more than 1,000 participants. [National Institute of Allergy and Infectious Diseases \(NIAID\)](#), part of the National Institutes of Health, is sponsoring the trial.

The clinical trial is the next iteration of NIAID's [Adaptive COVID-19 Treatment Trial \(ACTT\)](#), which began on Feb. 21 to evaluate remdesivir, an investigational broad-spectrum antiviral treatment developed by Gilead Sciences, Inc. That trial closed to enrollment on April 19 after recruiting 1,063 participants at 47 U.S. and 21 international sites. An independent data and safety monitoring board (DSMB) overseeing the trial met on April 27 and shared their preliminary analysis with the study sponsor, NIAID. Their analysis showed that [patients who received remdesivir had a statistically significant shorter time to recovery compared to patients who received placebo](#). More detailed information about



This scanning electron microscope image shows SARS-CoV-2 (round blue objects) emerging from the surface of cells cultured in the lab. SARS-CoV-2, also known as 2019-nCoV, is the virus that causes COVID-19. The virus shown was isolated from a patient in the U.S. Image captured and colorized at NIAID's Rocky Mountain Laboratories (RML) in Hamilton, Montana. *NIAID*

# ACTIV!

Opinion

## VIEWPOINT

### Accelerating COVID-19 Therapeutic Interventions and Vaccines (ACTIV) An Unprecedented Partnership for Unprecedented Times

**Francis S. Collins, MD, PhD**

Office of the Director,  
National Institutes of  
Health, Bethesda,  
Maryland.

**Paul Stoffels, MD**

Johnson & Johnson,  
New Brunswick,  
New Jersey.

**It has been more than a century** since the world has encountered a pandemic like coronavirus disease 2019 (COVID-19), and the rate of spread of COVID-19 around the globe and the associated morbidity and mortality have been staggering.<sup>1</sup> To address what may be the greatest public health crisis of this generation, it is imperative that all sectors of society work together in unprecedented ways, with unprecedented speed. In this Viewpoint, we describe such a partnership.

First reported in Wuhan, China, in December 2019,

academic experts. Participants sought urgently to identify research gaps and to discuss opportunities to collaborate in an accelerated fashion to address the complex challenges of COVID-19.

These critical discussions culminated in a decision to form a public-private partnership to focus on speeding the development and deployment of therapeutics and vaccines for COVID-19. The group assembled 4 working groups to focus on preclinical therapeutics, clinical therapeutics, clinical trial capacity, and vaccines (**Figure**).

<https://jamanetwork.com/journals/jama/fullarticle/2766371>

# Looking for a Vaccine...

Science

POLICY FORUM

Cite as: L. Corey *et al.*, *Science*  
10.1126/science.abc5312 (2020).

## A strategic approach to COVID-19 vaccine R&D

By **Lawrence Corey<sup>1,2</sup>**, **John R. Mascola<sup>3</sup>**, **Anthony S. Fauci<sup>4</sup>**, **Francis S. Collins<sup>5</sup>**

<sup>1</sup>Vaccine and Infectious Disease Division, Fred Hutchinson Cancer Research Center, Seattle, WA 98109, USA. <sup>2</sup>Departments of Medicine and Lab Medicine, University of Washington, Seattle, WA 98195, USA. <sup>3</sup>Vaccine Research Center, National Institute of Allergy and Infectious Diseases, National Institutes of Health, Bethesda, MD 20892, USA. <sup>4</sup>National Institute of Allergy and Infectious Diseases, National Institutes of Health, Bethesda, MD 20892, USA. <sup>5</sup>National Institutes of Health, Bethesda, MD 20892, USA.

Email: [afauci@niaid.nih.gov](mailto:afauci@niaid.nih.gov)

**A public-private partnership and platform for harmonized clinical trials aims to accelerate licensure and distribution.**

# THE WALL STREET JOURNAL.

This copy is for your personal, non-commercial use only. To order presentation-ready copies for distribution to your colleagues, clients or customers visit <https://www.djreprints.com>.

<https://www.wsj.com/articles/medical-research-is-locked-down-too-11588629492>

OPINION | COMMENTARY

## *Medical Research Is Locked Down, Too*

Clinical trials grind to a halt as patients are told to stay home and research personnel are redeployed.

By *Kevin Sheth*

May 4, 2020 5:58 pm ET

I lead clinical trials for medications to treat crippling disorders such as stroke and brain hemorrhages. During the past few months, every one of these studies has come to a grin halt. The pandemic has thrown clinical trials, the lifeblood of new treatments, into disar

## STAT

**Covid-19 has shuttered scientific labs. It could put a generation of researchers at risk**

By Justin Chen

May 4, 2020



Kena Betancur/Getty Images



BROWSE

Bloomberg

Law


Search Pharma & Life Sciences News

Advanced Search

Go

Login

Pharmaceutical & Life Sciences News



Francis Collins, director of the National Institutes of Health, testifies during a Senate panel hearing on May 7, 2020.  
Photographer: Andrew Harnik/AP Photo/Bloomberg

## Virus Will Cost NIH \$10 Billion in Lost Research, Director Warns (1)


May 7, 2020, 1:35 PM; Updated: May 7, 2020, 3:22 PM

Listen

f

in

- NIH's Collins testifies before Senate health panel on testing
- \$10 billion in lost research due to lost productivity, employment costs



**Jeannie Baumann**  
Reporter

<https://news.bloomberglaw.com/pharma-and-life-sciences/virus-will-cost-nih-10-billion-in-lost-research-director-warns>



# Effects of COVID-19 on the Federal Research and Development Enterprise

April 10, 2020

# Extensive Disruption

- Laboratories closed or nearly so
- Communications suboptimal
- Conferences and meetings cancelled or disrupted
- Supply chains interrupted; resources lost
- Widespread financial losses
- Required telework has disparate effects (e.g. childcare)
- Anxiety high, especially for early career investigators

<https://crsreports.congress.gov/product/pdf/R/R46309>

# NIH is Open for Business

- Extramural staff are working remotely
- We continue to process applications and make awards
- We are conducting peer review meetings virtually
- We are working diligently to provide funding opportunities to support COVID-19 research



# Accommodations and Flexibilities

- Application deadlines
- Donating research supplies
- Salaries and stipends
- Human subject research, clinical trials
- Animal research, guidance to IACUCs
- Extensions on reporting; flexibility on expenditures
- Accommodations for loss of time

<https://grants.nih.gov/policy/natural-disasters/coronavirus.htm>

# Advice for Applicants & Recipients

- For general questions regarding COVID-19 flexibilities, contact NIH's Office of Extramural Research at [grantspolicy@nih.gov](mailto:grantspolicy@nih.gov)
- For questions specific to your NIH award, contact the grants management or program staff at the funding institute or center

## CORONAVIRUS DISEASE 2019 (COVID-19)

Information for Applicants and Recipients



FAQs frequently updated. Check back often!

<https://grants.nih.gov/policy/natural-disasters/corona-virus.htm>

# Considerations for Reopening

**Duke University School of Medicine** Search

About Us Education Research Patient Services Academic Departments

Research > Reopening Research Laboratories

## Reopening Research Laboratories



Duke University policies for employees approved to return to research laboratories in phase 3 of the response to the COVID-19 pandemic

[General Principles](#) [Daily Reporting](#)

**JOHNS HOPKINS**  
BLOOMBERG SCHOOL  
of PUBLIC HEALTH  
Protecting Health, Saving Lives—Millions at a Time

## COVID-19 | SCHOOL OF PUBLIC HEALTH EXPERT INSIGHTS



### COVID-19 SCHOOL OF PUBLIC HEALTH EXPERT INSIGHTS

**ARTICLES** QUESTIONS & ANSWERS PODCAST EVENTS DAILY ROUNDUP IN THE NEWS NEWS RELEASES

Home > COVID-19 > Articles > A Plan for a Phased Reopening Guided by Public Health Principles

## A Plan for a Phased Reopening Guided by Public Health Principles

A report from the Johns Hopkins Center for Health Security aims to help governors navigate the process

APRIL 17, 2020

The U.S. is collectively and eagerly awaiting Reopening Day.



# MONTGOMERY COUNTY | COVID-19 DASHBOARD

Last updated: 05/25/2020

**10,291** **531**

Cases

Deaths

In order to continue the gradual relaxing of restrictions and move toward reopening businesses and public amenities in our County, a variety of public health-related criteria and conditions must be met or show substantial progress. The metrics below are best when viewed and considered holistically. They show (1) the current calculated 3-day rolling average, and (2) the number of days out of the last 14 days that saw improvement. These signify the goals of either a decrease in new cases/deaths/hospitalizations/patients or increasing capacity in County hospitals. Metrics will be updated by 2 p.m. daily.

Number of New  
Confirmed Cases

**226**

THREE-DAY AVG

**9** /14 Days  
Declining Days

Number of New COVID-19  
Related Deaths

**8**

THREE-DAY AVG

**8** /14 Days  
Declining Days

COVID-19 Related  
Hospitalizations

**337**

THREE-DAY AVG

**11** /14 Days  
Declining Days

Number of COVID-19  
Related Emergency Room  
Patients

**16**

THREE-DAY AVG

**6** /14 Days  
Declining Days

COVID-19 Related ICU  
Hospitalizations

**118**

THREE-DAY AVG

**8** /14 Days  
Declining Days

Acute Care Bed  
Utilization Rate <70%

**71%**

THREE-DAY AVG

**1** /14 Days  
of Adequate Capacity

Percentage of  
Ventilators in Use <70%

**52%**

THREE-DAY AVG

**14** /14 Days  
of Adequate Capacity

[Click here to see detailed metrics](#)



# MONTGOMERY COUNTY | COVID-19 DASHBOARD

Source: MIEMSS | Last updated: 05/26/2020

## COVID-19 Related Hospitalizations

This graph displays the number of infected residents that are currently in Montgomery County's Hospitals.

In consultation with our public health officials, Montgomery County has identified guidelines to help determine when it is safe to reopen. This indicator conveys the need to see:

**A sustained decrease in COVID-19 related hospitalizations**

**337**

**THREE-DAY AVG**

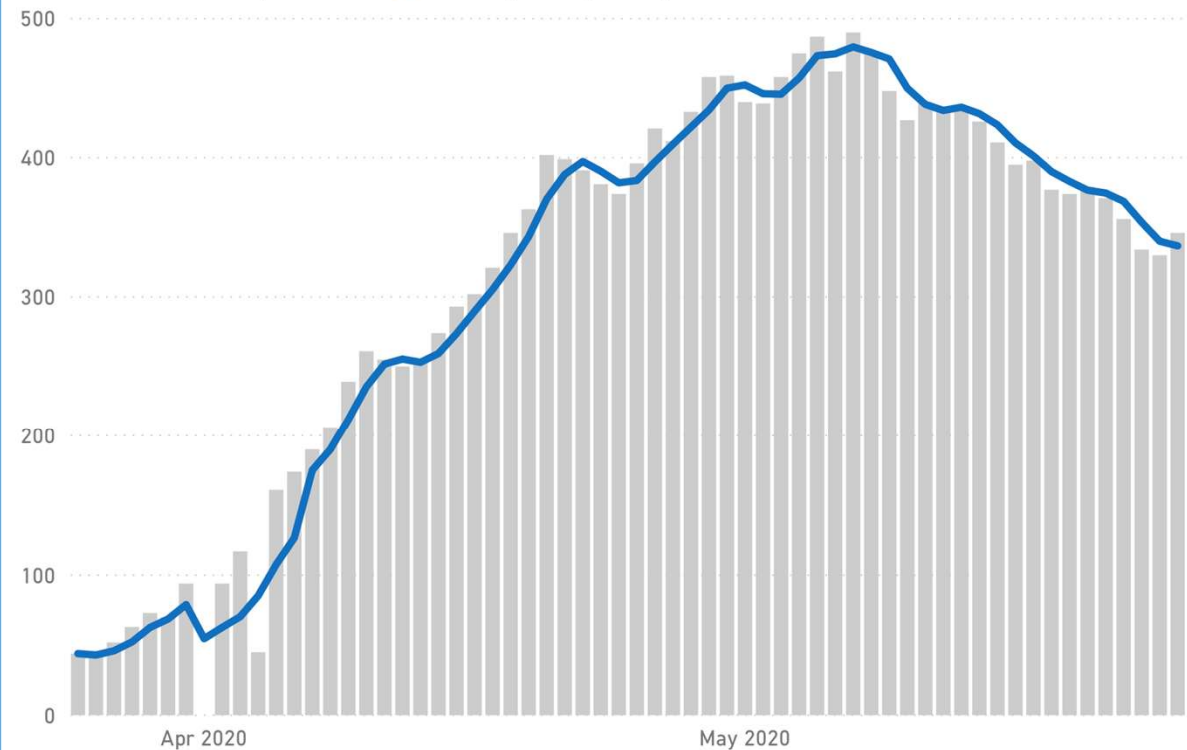
**11 / 14**

**Declining Days**

## Number of COVID-19 related hospitalizations

[Click here to see next metric](#) →

● COVID-19 related hospitalizations ● Three-day rolling average



# Closing Thoughts

- Novel virus, novel challenges
- Exciting science with results already coming in
- ACTIV, RADx, supplementals, and more
- For non-COVID, extreme disruption and anxiety
- NIH accommodations and flexibilities
- Reopening – work in progress: phases, monitoring





# FEDERAL DEMONSTRATION PARTNERSHIP

Redefining the Government & University Research Partnership

## Federal Panel

Barbara Orlando, DoD

Michelle Bulls, NIH

Dr. Stephen Meacham, NSF



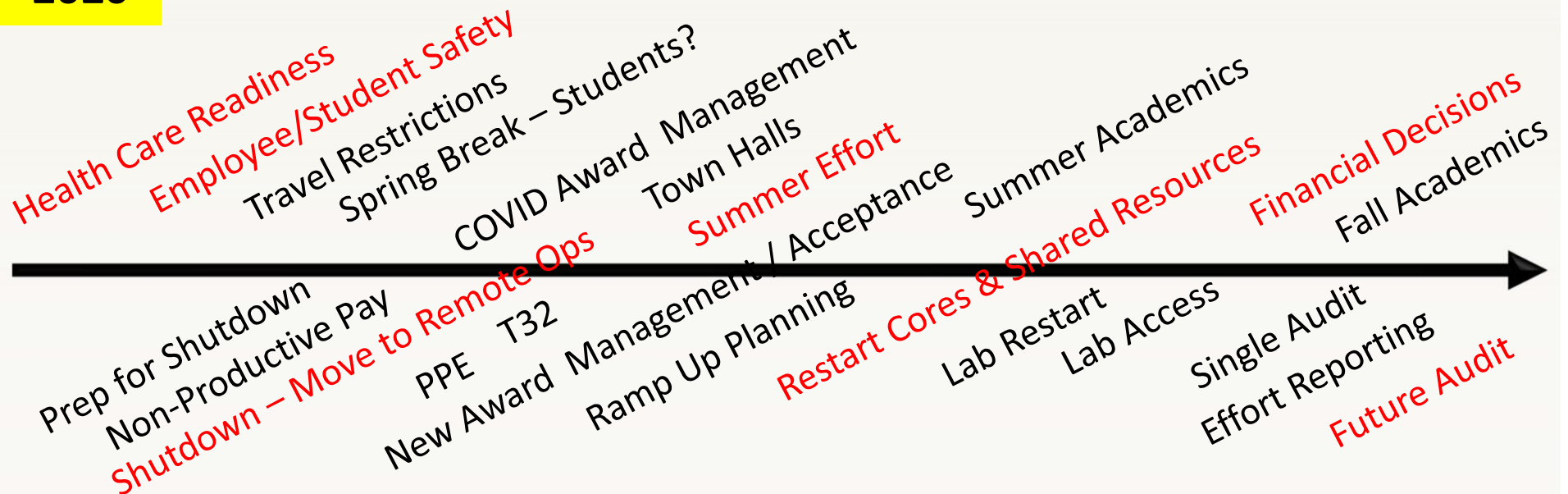
# COVID: University Timeline

March  
2020

(71 Days)

Today

Tomorrow



Other Issues: Core Lab – Burn Rate, Industry & Foundation Relations, Definition of Essential, International faculty/student, etc.

Concerns: Safety, Continuity of Mission, Graduate/PostDoc Support, Financial viability...

**DRAFT & INCOMPLETE**





# Themes

- Extension of OMB & Agency/Sponsor Flexibility
- Non-Productive Time Tracking & Implications
- Potential for Loss of Funds / Research Progress (Programmatic Concerns)
- Audit Concerns – Current & Future
- Supplemental Funding Opportunities
- RPPR Reporting / Grant by grant reporting requirements
- Consistency / Harmonization of Regulations
- Burden (Bandwidth / Delay NSF C&P and NIH OS)
- Support for Graduate Student/PhD/Early Career Faculty
- Post COVID Ops / Restart



## Office of the Under Secretary of Defense (Research & Engineering)

*FDP Meeting May 27, 2020*

**Barbara Orlando**

DoD Grants Policy Manager



# Then – OMB Memorandum 20-11



OMB is allowing Federal agencies to grant class exceptions in instances where the agency has determined that the purpose of the Federal awards is to support the continued research and services necessary to carry out the emergency response related to COVID-19.



# Now - OMB Memorandum M-20-17



Effective March 19, 2020 and consistent with OMB Memo M-20-17, the DOD will allow (on a case/program basis) grantees to:

- delay submission of financial, performance and other reports on currently-active award accounts up to three months beyond the normal due date
- nonrefundable travel expenses incurred for travel canceled due to COVID-19 to be charged to active awards
- no cost extensions when possible
- recipients to continue to charge salaries and benefits to currently-active awards consistent with the recipients' policy of paying salaries (under unexpected or extraordinary circumstances) from all funding sources. To the maximum extent practicable, recipients are expected to invoke or institute any and all reasonable mitigation actions and practices to lessen the cost to the government during the crisis period.



# Now – DoD Information



**For more information in regards to COVID-19, please visit the following links:**

Coronavirus Disease 2019 (COVID-19) - [Caution-  
https://www.coronavirus.gov](https://www.coronavirus.gov)

What the U.S. Government is Doing - [Caution-  
https://www.usa.gov/coronavirus](https://www.usa.gov/coronavirus)

Coronavirus (COVID-19) - [Caution-  
https://cdc.gov/coronavirus](https://cdc.gov/coronavirus)

U.S. Department of Defense-  
<https://www.defense.gov/Explore/Spotlight/Coronavirus/>

U.S. Army -  
[https://www.army.mil/coronavirus/?from=hp\\_spotlight#fact-sheet](https://www.army.mil/coronavirus/?from=hp_spotlight#fact-sheet)

U.S. Navy - <https://navylive.dodlive.mil/2020/03/15/u-s-navy-covid-19-updates/>

U.S. Air Force- <https://www.af.mil/News/Coronavirus-Disease-2019/>





# What is to come



Time



Funding



Personnel



Changes in ways business is conducted



# Updates for NIH Applicants and Recipients of NIH Funding Related to COVID-19





# Where were we?

- March 2020: OMB authorized agencies to utilize administrative flexibilities to recipients conducting COVID-19 research and recipients affected by COVID-19
- NIH implemented these flexibilities and remains committed to working with its applicants and recipients during the public health emergency
  - [General Frequently Asked Questions \(FAQs\) - Proposal Submission and Award Management Related to COVID-19 - NOT-OD-20-083](#)
  - [Flexibilities Available to Applicants and Recipients of Federal Financial Assistance Affected by COVID-19 - NOT-OD-20-086](#)
  - [UPDATE: NIH Late Application Policy Due to Public Health Emergency for United States for 2019 Novel Coronavirus \(COVID-19\) - NOT-OD-20-091](#)

# Where are We Now?

- OMB Memo [M-20-17](#) nearing expiration in June
- OMB considering whether flexibilities will be extended—NIH fully supports the need to extend without reservation
- NIH continuing to review and update guidance based on feedback from recipients and NIH staff
- Initial FAQs developed to address high-level policies
- Current updates to FAQs add details and context to support recipient needs
- OER through OPERA continues to update FAQs and staff guidance for consistency in responses to our community

# What's Now? Working to Perfect FAQs for Recipients based on Community Feedback

- Salaries and stipends:
  - Updated FAQ to address summer appointments, the relevant types of institutional policies (e.g. emergency or disruptive event policies), and initiating support on new grant awards vs. continuing to pay for ongoing work.
- Documenting and reporting delays in research:
  - Initial FAQ directed recipients to contact funding IC
  - Recipients unsure of how to proceed, some drafted standard letters, others began notifying NIH for each grant
  - Based on feedback, updated to clarify that details must be provided in the next RPPR

# What's to Come from NIH?

- Work with HHS and other research agencies to extend flexibilities for our recipients
- Work to consistently apply the flexibilities across the research platform
- Continue to update and clarify FAQs for recipients and our NIH extramural staff
- Support recipients as grant activities to restart activities
- Implement NIH Internal Control Plan and Risk Management activities for COVID-19 supplemental funding

# NIH Internal Control Plan

- NIH developed an internal control plan as required by OMB *Circular A-123, Management's Responsibility for Internal Controls*
- Approaches:
  - FOAs clearly outline requirements for use of funds, and separate reporting requirements; submit weekly forecast report to HHS on upcoming FOAs and planned awards
  - Notices of Award contain terms and conditions outlining that funding is restricted to the authorized use of the COVID-19 emergency funding.
  - Funds tracked separately in eRA and the HHS Payment Management System (e.g. separate Document numbers and separate Type 3 supplement records)

# Still have questions?

- For general questions regarding COVID-19 flexibilities, contact NIH's Office of Extramural Research at [grantspolicy@nih.gov](mailto:grantspolicy@nih.gov)
- For questions specific to your NIH award, contact the grants management or program staff at the funding Institute or Center

## CORONAVIRUS DISEASE 2019 (COVID-19)

Information for Applicants and Recipients



FAQs frequently updated. Check back often!

<https://grants.nih.gov/policy/natural-disasters/corona-virus.htm>



# **COVID Federal Panel NSF Overview**

**Federal Demonstration Partnership Meeting**

**May 27, 2020**



**National Science Foundation**

**WHERE DISCOVERIES  
BEGIN**

# Contacts

- Jean Feldman

- Head, Policy Office
- Division of Institution & Award Support
- Office of Budget, Finance & Award Management
- [policy@nsf.gov](mailto:policy@nsf.gov)



- Stephen Meacham

- Section Head, Integrative Activities
- Office of Integrative Activities
- [smeacham@nsf.gov](mailto:smeacham@nsf.gov)

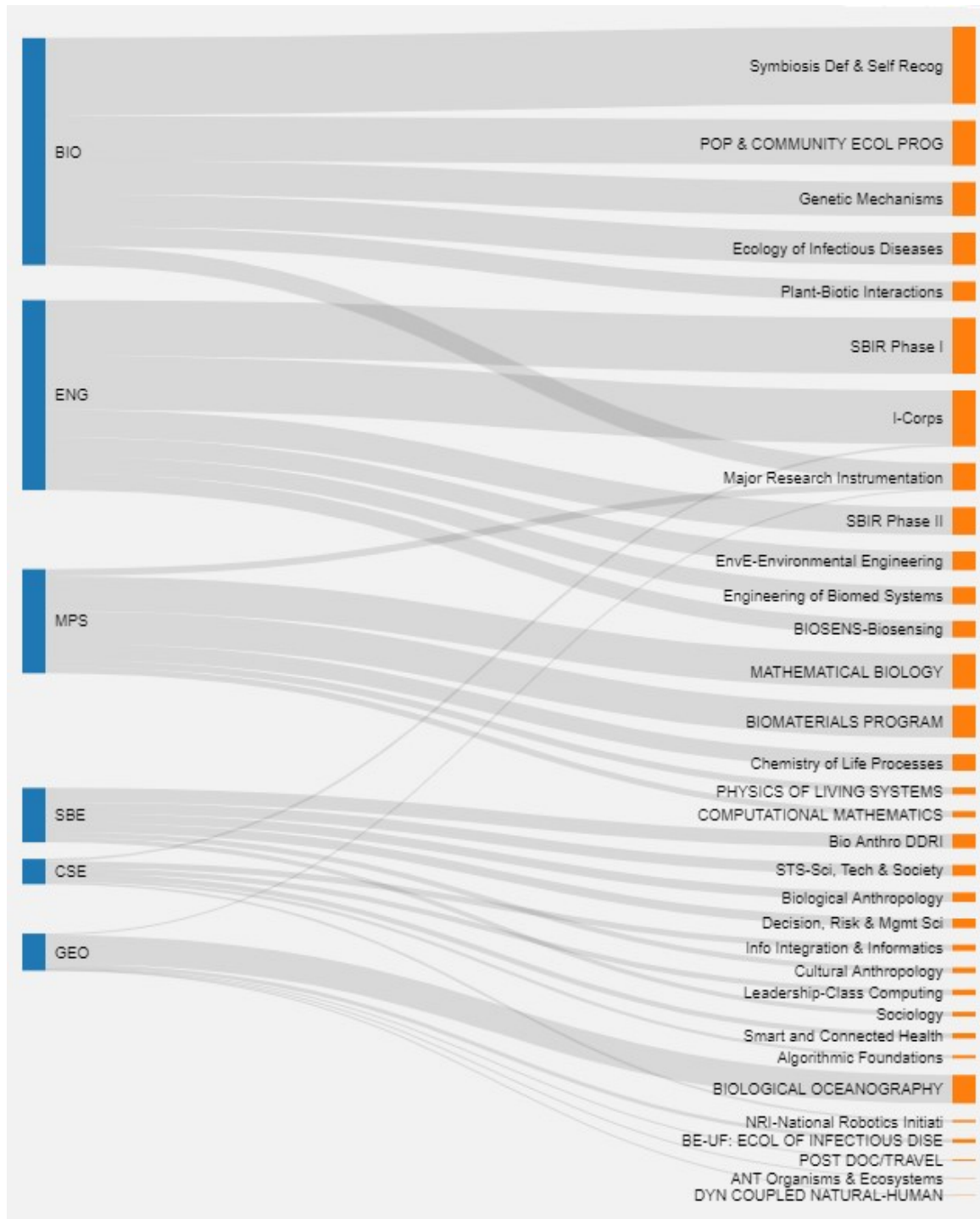


# Topics

- NSF Funding Programs and COVID-19
- Research Recovery Planning
- NSF Research Planning Task Force
- NSF Community Guidance







## Understanding of Disease Systems – Foundational Funding Programs

# COVID-19: NSF Response

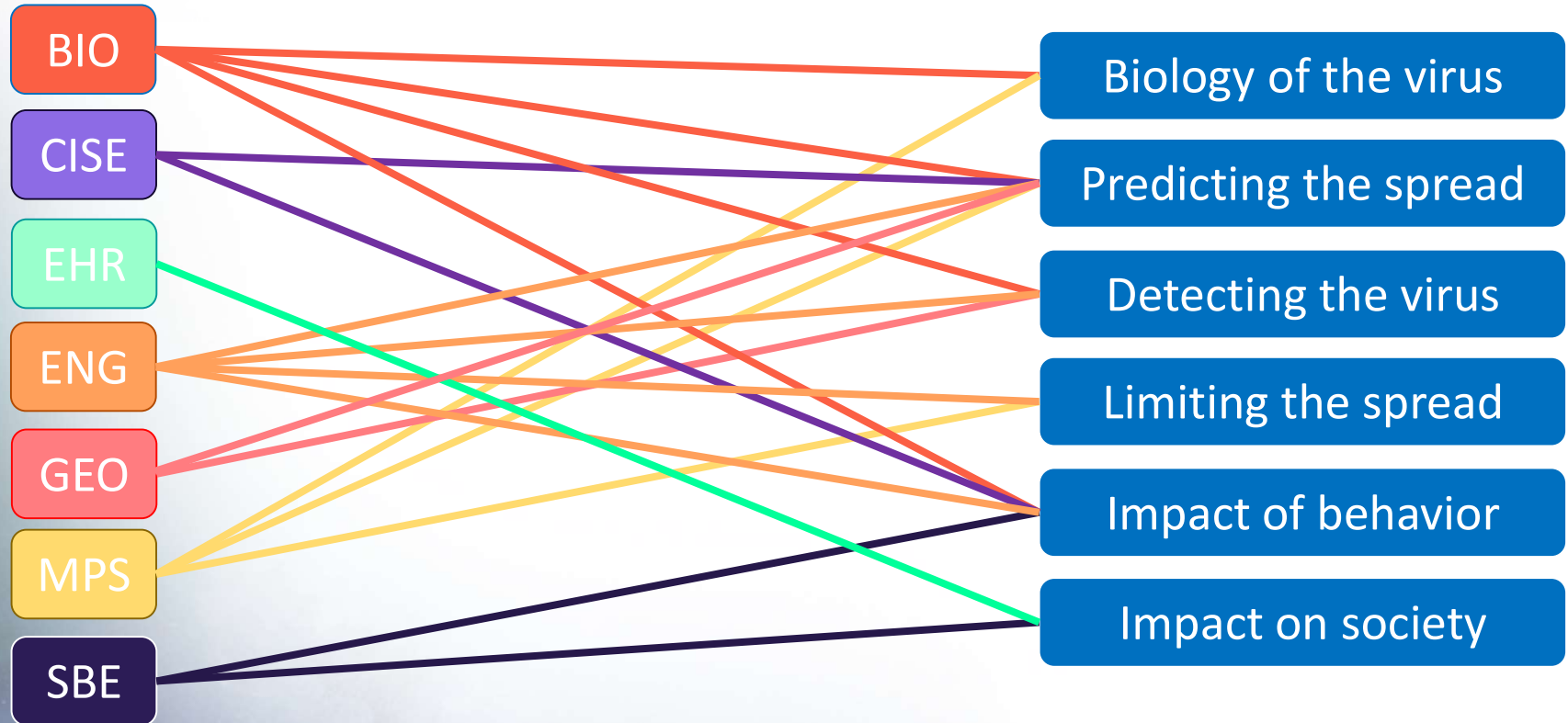
## RAPID Response Research

- Dear Colleague Letter on the Coronavirus Disease 2019 and associated FAQs
- Dear Colleague Letter: Provisioning Advanced Cyberinfrastructure to Further Research on the Coronavirus Disease 2019
- Dear Colleague Letter: Request for SBIR-STTR Phase I Proposals Addressing COVID-19



# COVID-19 RAPIDs – Thematic Overview

National Science Foundation





# Research Recovery Planning COVID-19 Pandemic – A Major Disruptor

Affects both  
researchers and  
research organizations

Interrupts laboratory  
and field-based  
science

Impairs operation of  
facilities

Adversely affects  
undergraduate and  
graduate students,  
postdoctoral fellows,  
and early-career faculty

May  
disproportionately  
affect more vulnerable  
groups and  
organizations

Disrupts international  
collaborations

Potentially impairs  
finances of  
universities and  
colleges over the  
medium term



# Research Recovery Planning Recovery Planning Task Force

Charged to assist Agency with:

- I. Developing a strategy and timeline for facilitating a smooth recovery of normal research and education activity by NSF grantees; and
- II. Identifying what additional resources might be needed to achieve this.



National S



# Research Recovery: Broad Themes

PEOPLE

**1. Research Recovery:** Mitigating Losses and Catalyzing the Recovery of STEM and STEM Education Research Projects

INFRASTRUCTURE

**2. Maintaining the STEM Talent Pipeline:** Mitigating losses of STEM talent

**3. Ensuring NSF Capacity to Implement Recovery**



# COVID-19: NSF Response Community Guidance

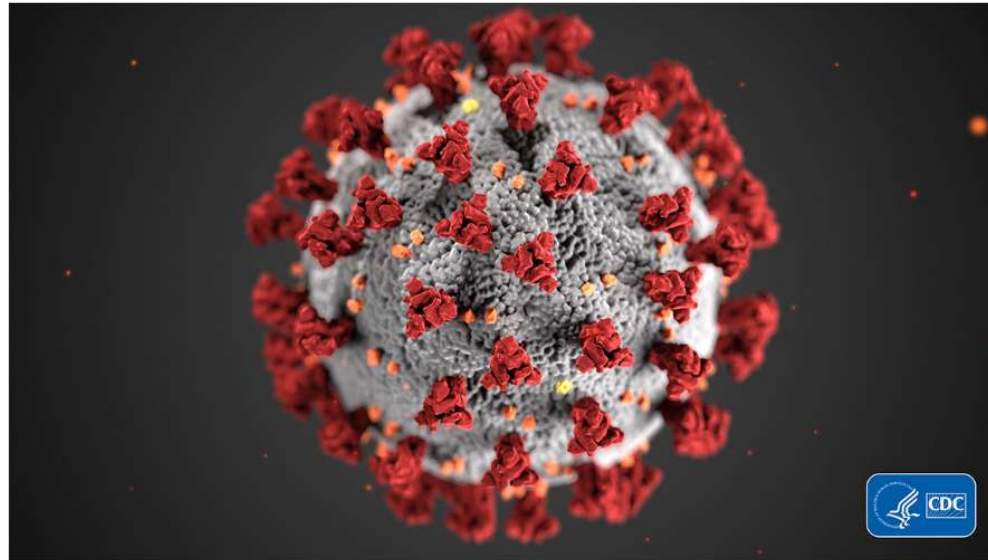


Image credit: Alissa Eckert, MS; Dan Higgins, MAM

## Coronavirus Information

NSF encourages you to take extra precautions to protect yourselves and your families against COVID-19. If you are an NSF employee looking for guidance, please visit [InsideNSF](#). If you are a member of the public, please visit [cdc.gov](#).

### Federal Guidance on Coronavirus (COVID-19)

- [Coronavirus.gov](#)
- [Coronavirus Disease 2019 \(COVID-19\)](#)
- [What the U.S. Government is Doing](#)

### NSF Guidance

- [Important Notice No. 146 - NSF Letter to Community Regarding COVID-19](#)
- [NSF Implementation of OMB Memorandum M-20-20](#)
- [NSF Implementation of OMB Memorandum M-20-17](#)

[https://www.nsf.gov/news/special\\_reports/coronavirus/](https://www.nsf.gov/news/special_reports/coronavirus/)

# COVID-19: NSF Response

## Community Guidance

- Important Notice 146 – NSF Letter to the Community Regarding COVID-19
- Implementation of OMB Memo M-20-17, *Administrative Relief for Recipients and Applicants of Federal Financial Assistance Directly Impacted by the Novel Coronavirus (COVID-19) due to Loss of Operations*
- Implementation of OMB Memo M-20-20, *Repurposing Existing Federal Financial Assistance Programs and Awards to Support the Emergency Response to the Novel Coronavirus (COVID-19)*
- Impact on Existing NSF Deadlines



# COVID-19: NSF Response

## Community Guidance

- NSF Guidance on the Effects of COVID-19 on Human Subjects Research
- NSF Guidance on the Effects of COVID-19 on Vertebrate Animals Research
- NSF Guidance for Major Facilities and Contracts Regarding COVID-19
- Frequently Asked Questions
  - For Proposers and Awardees
  - For SBIR and STTR Grantees
  - For Research Experiences for Undergraduates (REU) Sites, Research Experience for Teachers (RET) Sites, International Research Experiences for Students (IRES) Sites, and Similar Activities
  - For NSF Panelists



# COVID-19: NSF Response

## NSF Implementation of OMB Flexibilities

- Flexibility with SAM registration;
- Flexibility with application deadlines;
- Allowability of salaries and other project activities;
- Allowability of costs not normally chargeable to awards;
- Prior approval requirement waivers;
- Exemption of certain procurement requirements;
- Extension of financial and other reporting;
- Extension of currently approved indirect cost rates
- Extension of closeout;
- Extension of single audit submission.

# COVID-19: NSF Response

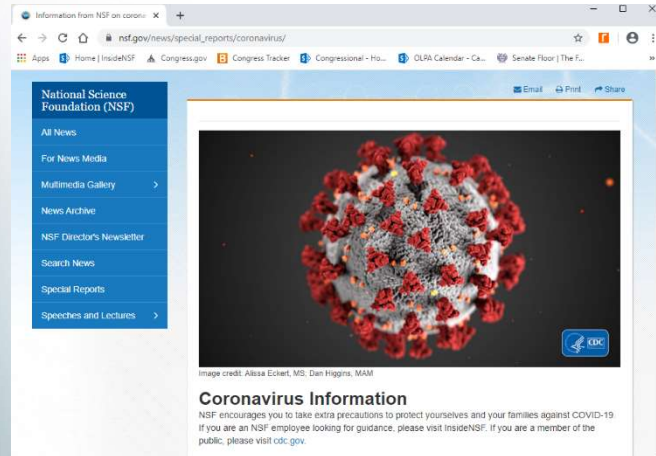
## Internal NSF Response

- In-person panels moved to virtual platforms
- NSF-sponsored conferences are encouraged to move online or reschedule to a later date
- All staff are now teleworking
- All non-essential travel canceled



# NSF Resources

National Science Foundation

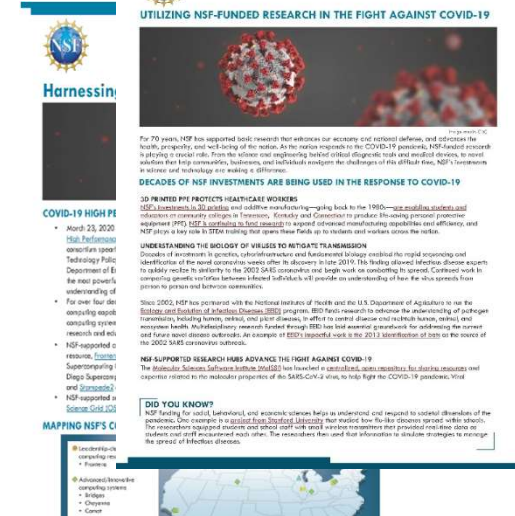


NSF.gov/coronavirus



State Fact Sheets

FY 2019



NSF COVID-19

Fact Sheets

For NSF resources and fact sheets, please visit [www.nsf.gov/about/congress/factsheets.jsp](http://www.nsf.gov/about/congress/factsheets.jsp)

# Research Recovery Planning

## Looking ahead

- NSF will continue to address flexibilities that can immediately be implemented in COVID-19 memos
- Will consider internal and external input

We welcome your input!

[policy@nsf.gov](mailto:policy@nsf.gov); [smeacham@nsf.gov](mailto:smeacham@nsf.gov)





For More Information:

Ask Early, Ask Often!

[policy@nsf.gov](mailto:policy@nsf.gov)



National Science Foundation

WHERE DISCOVERIES  
BEGIN



# Thanks!

- Logistics & Coordination
  - Lillian Andrews (NAS)
  - Denise Moody (FDP) & David Wright (FDP)
- Plenary & Panelists
  - Dr. Mike Lauer
  - Barbara Orlando
  - Michelle Bulls
  - Dr. Stephen Meacham



## Upcoming Sessions

- **Supporting COVID-19 related Data Transfer and Use Agreement needs** (Wednesday, May 27, 2020 from 4-5pm EDT)
- **The Impacts of COVID-19 on Research Activities: The University Perspective** (Thursday, May 28, 2020 from 1-2:30pm EDT)

([thefdp.org/](http://thefdp.org/))